

1. Amenity space for picnics and games
2. Green meeting space
3. Children's natural play area
4. Fruit trees and bulbs
5. Pond
6. Wet Grassland
7. Storage/Shelter/Toilet
8. Micro forest with den building areas
9. Weather station
10. Community planting

- Site boundary line
- Wildlife Hubs

11. Native enriched planting/ Wildlife Hubs
12. Bird watching hide
13. Seating or picnic benches
14. View point / star gazing
15. Willow tunnel
16. Entrance and signage
17. Bicycle stands
18. Path around the field
19. Wildflower meadow with mown path
20. Board access to the pond



The pond with dipping platform will create an amazing arrivals experience as well as biodiversity and amenity benefits.



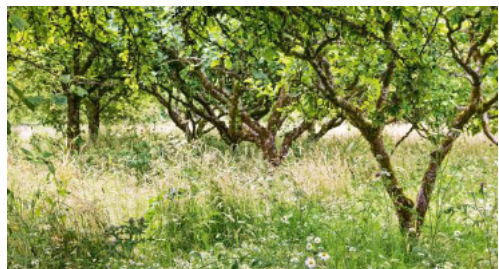
A tiered green meeting space is proposed for education, social events, workshops and gatherings.



View point - A relaxation zone is proposed on the north top end of the site for enjoying the view, or for star gazing.



Biodiversity - Nesting boxes, feeding stations, bug hotels, hedgehog boxes and bat boxes will encourage wildlife into the area with the aim of enhancing biodiversity together with activities to educate about wildlife.



Local varieties of fruit trees such as Tamar Valley Cherries, with species rich grassland underplanting will increase the natural ambience.



The path will cross the pond as a boardwalk and be surfaced so it is wheelchair / pushchair friendly from the entrance gate across the pond and up to the toilet and green meeting space.



A selection of natural play features are proposed as an alternative route to paths. Constructed using terrain modulation, timber, local stone, and other natural materials, and including living features such as a willow tunnel.



Amenity space can be used for formal and informal activities, picnics, social gatherings and impromptu games.



Storage space, shelter and toilet are proposed close to the meeting space to maximise opportunities.