

LANDULPH NEWSLETTER



Your guide to what's happening in the area
Issue no 113 October/November 2024

Clare and team painting the new *Woo Woo Loo*
See page 17

Parish Council September

Public Forum A new sign has appeared on the footpath at Duchess Green, saying 'Used by horses'. The path is not a bridleway and Parish Footpath Councillor, Clare Tagg, is on the case.

The lottery application to provide batteries at the Memorial Hall had been turned down. The supporting grant the Council had agreed will now be on hold pending alternative grant submissions.

Planning An application for an extension in the garden at 1 Barns Terrace in Ellbridge. It was thought to dominate the garden of the neighbouring house, but no public comments had been made. The application was therefore, supported.

Planning for the passing place at Highdown was at last progressing. A diagram showing the change to Cornish hedges was presented. (Note: this was first proposed 12 years ago!)

Climate Working Group There was not much to report after the summer break. The BioBlitz had closed and the 454 bus is now running on Thursdays. The 454 is an express bus to Saltash station and concessionary passes are valid. The bus returns mid-afternoon, so some users have to make their own way home. The alternative is to take the No 12 to Hatt, and Councillor Tagg said she would always try to help users who found themselves stranded!

Orchard Working Group (There is a full report on the Council website). The composting toilet needed a lot of preservative (probably necessary!) but was now complete and in use. The pond in Duchess Green had been dug out, and footings for the boardwalk prepared. The proposed bridge over the pond had been simplified and was now to be pedestrian only. The team had decided not to install the slide from the playground as there were safety issues. Two working days are planned – 3 and 17 November. Thirty trees and 2,000 bulbs need planting. Duchess Green is still not open to the public.

Governance and Finance Working Group The report 'excited' councillors (I exaggerate!) as it suggested a £23k negative balance at the end of the year. This was spurious as it ignored receipts. Councillors eventually relaxed.

Playing Field Use of the playground had been informally monitored over summer. Fewer cars than expected were seen, but there seems to be some use by visitors from outside the parish. Some cars were parked by walkers, not 'play-ers'. Councillor Ansell reported that his grand-daughter had cracked how to use the monkey bars. Despite a previous decision, it had been decided not to move the dog/rubbish bin as it is in regular use. A life-ring had been installed on the bank.

Phone box handrail The supplier had visited the site and would start 'dreckly' - say six weeks lead time.

Cricket Field Callington Cricket Club's lease runs to December but

they will not renew. They quoted a problem with the water supply, but this appears somewhat spurious - they have made no efforts to resolve it. Their real problem appears to be a lack of volunteers for ground maintenance. In accordance with the donor's conditions, the Council will now investigate alternative cricket clubs via the English Cricket Board. The suggestion that the Council maintain the field and rent it out for cricket was not financially viable. A working group is required, and with some arm-twisting Councillors Libby Gawith, Gaye Braund and Martin Ansell 'volunteered'. The Council took a parishioner's comment that Callington Club were doing well but the Cornish League refused to use our ground because of the state of the pavilion.

It was noted that the field had been referred to as the 'Henry Searle Field'; Its correct title is 'Searle Family Field'.

Footpaths Vegetation around 20 and 30mph speed signs needs clearing. Quotes would be sought. Badger notices had arrived for 'Badger Alley', on the far side of the top hedge above Penyoke. The Footpath Member, Clare Tagg, asked if the stile at the top of the horse field above Penyoke could be removed. This was redundant as the adjacent fields had all been fenced. The stile was difficult and the path was likely to be used more as a route to the community orchards.

A38 Tunnel This will be extensively reported elsewhere, but the Council had met National Highways and made its concern known. A link to the National Highways website would be added to the Council website.

Recycling Centre Saltash Recycling Centre is in the wrong place but has seen an 11% increase in use over the last year. Hardly surprising, some may say, as other local sites have been closed. However, it seems that Cornwall's limits on the number of bags you can leave are higher than Devon's, so perhaps some Devonians have been braving the bridge to use the Saltash centre. Whatever, a trial booking system is in place. If you have any feedback, put it on www@cornwall.gov.uk

BODMIN MOT CENTRE

Enterprise Park, Midway Road, Bodmin, Cornwall PL31 2FQ

01208 77989

Garage Services & MOT Testing Station

Classes 4, 5 & 7

Servicing & Repairs

Commercial Interim Inspections

Brakes & Lights

Wheel Alignment & Tracking



Group Travel

Call: 01208 77989



16 to 72 seat coaches available for Private Hire, Corporate, VIP, Events & Conferences, Days Out, Private Tours, Sporting Events Weddings, Hen & Stag Parties, Airport Transfer, Group Events, Golfing Holidays & all your Christmas & New Year Transport Requirements

www.grouptourcoachhire.co.uk



Landulph School News

It was wonderful to welcome both the children and the sunshine back to school for the start of the new academic year. We are thrilled to extend a welcome to our new Foundation children who have started school for the first time, and any new families who have joined us. Our Foundation children have been very busy already these past few weeks, getting to know each other, their environment, and the new routines. The Year 1s have been wonderful role models for them. Thanks to the lovely weather, they have been able to enjoy Wild Tribe out on the field, painting leaves and creating pictures with them. Class 2 have started learning about the Cornish legend of Cormoran, the Giant, and how his wife built St Michael's

Mount. They have been able to incorporate their learning of the legend into creating some wonderful writing.

Class 3 have also been working hard on their writing, creating some amazing descriptions of biomes and focussing on their sentence openers and paragraphs. They are looking forward to their first trip, already planned for a few weeks' time, a theatre visit to see Grandma on the Moon!

If you have a child who is due to start school in 2025, we would love to welcome you to Landulph to show you our school. We also have a few places in other year groups. If you are interested in finding out what we can offer your child, please contact us to arrange a visit.

Karen Ball Headteacher

£25m Saltash Tunnel Technology upgrade

National Highways is starting the next phase of a major modernisation upgrade of the A38 Saltash Tunnel in Cornwall this Autumn. Work will continue until Autumn 2025

The £25 million investment by National Highways will replace the control system for the tunnel and its 'reversible' lane. The current control system is over 20 years old and approaching the end of its life. It is being upgraded as part of an extensive programme of improvement.

Work is currently due start at the end of November with weeknight closures of the tunnel which will continue until the work is finished. Speed restrictions and narrow lanes are being installed westbound between St Budeaux and the Tamar Bridge from early 2025 to allow work to be carried out in the verges.

In early to mid-2025, the current control system will need to be turned off and removed to allow installation of the new system. This means there will

only be one lane open in each direction through the tunnel
The Tamar Bridge will retain its four traffic lanes. These will be: one lane in each direction for A38 traffic, a lane dedicated for Saltash Town only in the westbound direction and the eastbound cantilever open for local and 'tag only' traffic.

More details about the work and closures, including dates, will be available on the National Highways webpage as the scheme progresses: <https://nationalhighways.co.uk/our-roads/south-west/a38-saltash-tunnel-technology-upgrade>. And for any questions, you can contact the National Highways Contact Centre on 0300 123 5000 (open 24/7), who will direct your enquiry to the team, or email: info@nationalhighways.co.uk.
Once work starts, remember to plan ahead, allow extra time or consider other routes, and check before you travel.

Please note: all enquiries should be directed to National Highways, and not to Tamar Bridge which is independently owned and operated by Cornwall Council and Plymouth City Councils. It has no responsibility for the tunnel.



Duchess Green – a progress report

The groundworks to restore an old pond and track and to create paths and new hedges are well under way at Duchess Green. The next stage is to build a boardwalk bridge across the pond, a tiered green meeting space and picnic spaces.

Duchess Green is closed to the public while work is completed and if you look over the gate, please mind the barbed wire. Follow progress on the Landulph Orchard Green section of the Parish Council website (www.landulph.org.uk).

Once the digging is done we will be planting hedges, bulbs, trees and a tiny Miyawaki forest to make Duchess Green a haven for wildlife and the community. Two planting days are planned on 3 and 17 November from 12 to 3pm; more details on the Loggers Volunteer WhatsApp nearer the time. We would welcome all local people to join us in the planting – no expertise needed! If you'd like to volunteer, please contact Phillida Jermain(phillidajermain@hotmail.com).



Film Club launches 14th season

Landulph's Film club was founded in 2010 and has brought a wide range of cinema's finest offerings to the Parish – from Japanese black and white classics to *Barbie*. The Club's screenings on the third Tuesday of the month are open to all, there is no joining fee or booking requirement, although the cheapest rates are for season ticket holders. The club's season runs from November to May, covering the dark and dreary winter months and the reawakening of spring. The screening room is the Memorial Hall and free refreshment is offered from 7pm before each 7.30pm performance.

The season starts on Tuesday 19 November with the most recent film adaptation of Jane Austin's *Emma*, a perennial favourite. It is an amiable and genial interpretation by first-time director, Autumn de Wilde with a very watchable performance by Anya Taylor Joy in the lead role.

In the build-up to Christmas, on Tuesday 17 December, the Club is showing *The Holdovers*. This is the story of boys at a New England boarding school who can't go home for Christmas and the staff of misfits who are assigned to look after them. It is a gentle, redemptive comedy/drama which was BAFTA nominated this year. It stars Paul Giamatti as a dishevelled, unmarried classics master, himself an ex-pupil of the school, who is in the same state of arrested development as his charges. The Alexander Payne script is funny, melancholy and full of spikey intergenerational dialogue. Information about the rest of the season may be found on the club website, www.landulphfilmclub.org.uk. Each screening costs just £7 to include a glass of wine, but you can save £14 (two free films) by buying a season ticket for £35. Tickets can be bought at the door (card only please) or in advance on the website.



It's a panto! Oh no! It isn't... Oh yes! It is.

It has been five long years since Landulph's last sell-out pantomime. The time is now right for a new and exciting venture which promises to be great fun and a fantastic opportunity to showcase the talents of the parish.

The vision is for an ensemble cast of performers to take to the stage in February 2025 to embark on a high-flying adventure to Neverland where Peter Pan, the boy who never grew up, takes on the infamous Captain Hook in a hilarious, full-length pantomime with suitably silly characters and side-splittingly funny dialogue. Based on J.M. Barrie's original story, Peter Pan is a magical show, loved by audiences of all ages and suitable for performers of all abilities! If you would like to be involved in the production as a performer, or even as part of the production team (helping with set/props/costume etc), come along to a meeting at Landulph Hall on Wednesday 23rd October at 6.30pm to find out more, or please email Sally Worth at sally.worth@gmail.com for more details.

This swashbuckling pantomime will have you 'hooked'!

Sally Worth



Landulph Festival of Music & The Arts

October 2024 Programme

Friday 4 Oct, 8pm
Bertie Pearce

£17

Bertie returns to Landulph to entertain with a unique blend of close up magic, illusions and witty comedy.

Saturday 5 Oct, 8pm
Sam Jewison Jazz Trio

£17

Sam's jazz trio performs his innovative interpretation of the Great American Songbook.

Sunday 6 Oct, 7:30pm
Mark Agnew

£12

Record-breaking, European Adventurer of 2023, Mark describes kayaking the entire Northwest Passage with his three friends.

Saturday 12 Oct, 8pm
Druzba Klezmer Band
£22 incl food

A traditional Oktoberfest led by Basil Bunelik and his band play Eastern European songs and dance tunes. Enjoy beer, food & dancing.

Sunday 13 Oct, 7:30pm
Inn Theatre Company
£17

A special theatrical production for Landulph explores Shakespeare's greatest heroes, villains and lovers.

Friday 18 Oct, 8pm
Pavel Ralev & Nazrin Rashidova
£17

Pavel, an international, classical guitarist and Nazrin, an acclaimed violin virtuoso, perform an eclectic programme of classical music.

Friday 25 Oct, 8pm
Dalla Duo
£17 incl diddy pasties

Specialising in Cornish Celtic music, Neil Davey & Hilary Coleman present the very best of traditional instrumental music and songs.

Saturday 26 Oct, 8pm
Vox Beatles
£22

Roll Back the years, dress up if you wish, and sing and dance to all the well known classics of the Fab Four.

The Festival Art Exhibition open during festival events and each weekend 2-5pm (except Sun 27 Oct) with cream teas on Sundays 3-4:30pm

All events at Landulph Memorial Hall PL12 6NF
Licensed Bar & door opens 1hr before each performance

Booking & info: www.landulphfestival.co.uk or 07866 680971

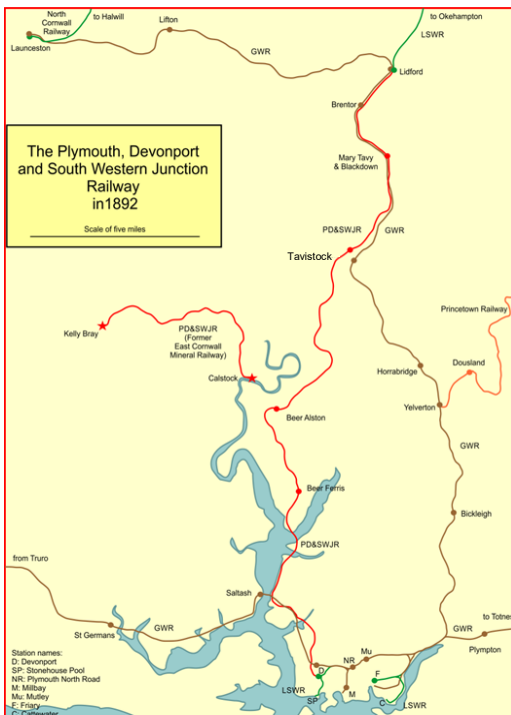
Season tickets £90 - save over £50

The Gunnislake Train Part 2.

In the previous article, we left the East Cornwall Mineral Railway (ECMR) needing to connect to the main rail network in order to overcome the difficulties for boats navigating the tidal stretches of the Tamar up to Calstock. Now it does get complicated – you'll need to concentrate. The nearest main lines were the Devon & Cornwall Central Railway (D&CCR) at Saltash and the South Devon & Tavistock Railway (SDTR), but both were deemed too expensive to extend.

In 1882, the Devon & Cornwall Central Railway (D&CCR) got permission to build a line from Lydford to Calstock, where it would join the ECMR. A year later, they sought powers to extend this line from Gunnislake via Bere Alston and Tamerton Foliot to the Devonport terminus of the London & South West Railway (LSWR). They did not seek to extend to Tavistock as this was already connected to the SDTR, itself part of the SDR (South Devon Railway between Exeter and Plymouth) and the Great Western Railway (GWR). However, at the same time the Plymouth, Devonport & South Western Junction (PD&SWR- a subsidiary of SWR) proposed to link Lydford to Devonport via Tavistock and Bere Ferrers. The D&CCR's proposal was rejected, and the PD&SWR's line (run by the LSWR) was opened on 2 June 1890. As part of the approval, the PD&SWR was obliged to adopt the ECMR line. The authorisation allowed it to continue as a narrow gauge and for the carriage of passengers (but not on the incline).

Another new subsidiary company, the Bere Alston and Calstock Light Railway (BA&CR) was created in 1902 with approval to connect the ECMR to the PD&SWJR line. The connection included upgrading the line to standard gauge (4ft 8 ½in) between the rails and constructing the Calstock viaduct (built 1904 to 1907) to bypass the inclined slope. The mineral railway continued operating until 1908 when the viaduct over the Tamar at Calstock was completed. As noted above, mining had declined over the period so the carriage of ore had virtually ceased. Outgoing loads were of bricks, granite and farm produce and coal, lime & manure were brought into the region. A steam-powered wagon hoist was built on the viaduct to hoist goods up and down from the quays, and this really signalled the end of



Calstock as a port. However, a prosperous market gardening industry based on #flowers and strawberries built up around the railway and flourished for decades, with its direct link to London via Okehampton. Manning the hoist unfortunately became too costly and by 1930 its use came to an end. It was eventually sold for scrap in 1934.

Gunnislake station was opened in 1908, but was moved to a new site and new buildings erected in 1994. The line continued to operate (probably unprofitably) until Dr Beeching came along. However, there was a reluctance to withdraw services as it is one of only three crossings on the lower stretch of the Tamar - the road/rail crossings at Saltash, the single-file bridge at Gunnislake and the rail crossing at Calstock.

It was the only river crossing that was saved, the Callington end of the line being closed beyond Gunnislake. The ECOMR stations at Latchley and Luckett went, along with the curious wooden station at Callington. The latter is now a factory estate; the former are private houses.

The Gunnislake to Callington section closed to goods traffic in 1965 and to passengers a year later. However, it has been mooted that the line from Bere Alston to Tavistock might be reopened.

P. Plume

Local Christmas Cards – Since Christmas 2006, Cargreen has been donating to Salvation Army Children in Need (sponsored by the Salvation Army) - instead of popping a card through a neighbour's door, but making a much valued donation to the above charity.

Thank you so much to all those who contributed to raising funds for Dec 2023 which totalled an amazing £670!! The table below lists those members who decided to donate. If you would like to have your name added or removed, please contact me - Sylvia Bedbrook, Laxtons. 01752 844519.

Richard & Debbie Allan Mac & Lucy Armstrong Ingrid & Steve Bailey Sylvia Bedbrook Christene Bowman Gaye & Martin Braund David Bullivent & Terry West Carol & Chris Hammond	Andrew & Jo Butcher Nan Doughty Andrea Edwards Glenn & Margaret Honey Angela Hume Morton Macleod Rose & Neil Cradick Penny Singleton Christine & Ron Norris	Gwenda & Nick Keane Annemarie Nathan James & Phillida Jermain Mike & Shirley Kitney Allen Pack & Cornelius O'Connor Valerie Taplin & David Ward Cindy Zimmer Gwen & Paul Morris
---	---	--



Established in 2002. Callington based cleaning specialist offering carpets & upholstery as well as hard floor cleaning service. I pride myself in being a friendly and experienced professional who endeavours to produce the best available results every time.

Carpets & Upholstery including low moisture process. Hard floor clean & seal including Tiles & grout, Stone eg Slate, granite Limestone. Vinyl, LVT

Telephone: 07905 188459
0800 3893393
e-mail: nevil_fresh@msn.com



Cargreen Cancer Research Fundraising Group

The autumn fundraiser will be a Soup and Pudding Lunch at Landulph Memorial Hall on Saturday 16 November.

A variety of soups will be on offer and delicious desserts. Tickets priced at £12 are available in advance from Gaye Braund at Tamarind, Penyoke, or Sue Wright at 1 Coombe Lane.

Landulph Summer Bioblitz Results



Nine people of all ages accepted the challenge to undertake a bioblitz in their garden this summer. Between them they identified 85 species of wildlife; mostly in sunny weather but one person completed 4 observation periods including one in the pouring rain!

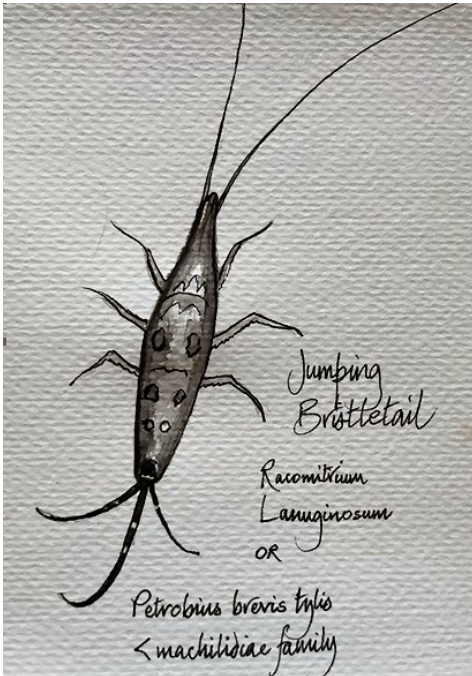
Most of the observations included some birds; our participants were lucky enough to spot an osprey, a purple heron and a sparrowhawk. There was a lot of careful identification of the many bugs observed; four different types of bees, three types of slugs, a 'very

whizzy ant', a cricket that had made its way inside and a pair of mating snails. Apart from one observation which identified 14 different 'wild flowers/weeds' people seemed less interested in recording plants.

When we helped Landulph School conduct a bioblitz in their school field earlier this summer, we were surprised by the relatively small number of species that we found. So, it was very heartening to see what a variety of wildlife there is in the gardens of Landulph.

In Britain there are over 10 million acres of private gardens, more acres than all the country's nature reserves, so gardens can really contribute to supporting wildlife.

Clare Tagg



Drawing by Gill Manning-Cox of a visitor to her garden

Parish Diary October and November 2024

Contact details for organisers of groups

Venues: LMH = Landulph Memorial Hall MHA = Memorial Hall Annexe
PC = Parish Church, CYC = Cargreen Yacht Club, BFC = Botus Fleming Church

Contacts for booking LMH and MHA Landulphhall@gmail.com

Bus (Thursdays weekly) 8.55am from the Quay to Saltash station and 2.35pm from Saltash Fore St to Cargreen 3.10	The 454 runs directly to Saltash station followed by Saltash Wesley Road and St Annes leaving the Quay at Cargreen at 8.55am and arriving at the station at 9.18. Return at 2.35pm from Saltash Fore Street via the station and arriving at Cargreen at 3.10pm . This service may be hailed and is timed to connect with trains towards Plymouth and Penzance. Full details of local services and connections on https://www.gocornwallbus.co.uk/services#top	
Film Club LMH	3 rd Tuesday in winter 7 for 7.30pm John Hall Johnhall1500@gmail.com	01752 841598
Gardening Club LMH	2 nd Tuesday 2.30pm Jen Hambly hambly.wayton@gmail.com	01752 846504
Good Companions	3 rd Tuesday 2.30pm Wilma Oakes	01752 843784
Hopper Shopper from Cargreen to Tamar View / Waitrose / B&M / Lidl and return	Landulph Wednesday Shopper Hopper runs from Cargreen to Carkeel (11am at junction of Coombe Lane/Fore Street) to Carkeel shops, return at 13:00 to your door - £3 for return trip. The hopper may be hailed en route. hub@CEPL12.co.uk	01752 848348 / 07916 259263
Memorial Hall Cafe	Every Friday 10am—12. Coffee, tea, soft drinks, home made cakes on sale. Come for the chat!	
Mah Jongg at Annemarie's	Every Wednesday 2.30—5pm Annemarie Nathan annemarienathan@hotmail.com	01752 844127
Mobile Library Coombe Lane	Every 4 th Friday 12.25—12.45 See Mobile Library - Cornwall Council	
Parish Church	For information see tamar7.org/tamar-valley-benefice/churches/landulph .	
Parish Council	3 rd Monday of the month except August, LMH, 6.30pm Details on PC website & village notice board	01752 240541

Refuse Collections	Next fortnightly rubbish collection on WEDNESDAY 2 October, alternating with recycling collections Food waste collected every WEDNESDAY Next fortnightly garden rubbish TUESDAY 15 October	03001 234141
Short Mat Bowls LMH	Wednesdays 2.30pm, Thursdays 7pm Shirley Kitney tregwheal@yahoo.co.uk	01752 846808
Taiji LMH	Wednesdays 10.00 – 11.00am Helen Manning helenmanning50@hotmail.com	01822 258208
Under 5s MHA	Monday - Friday morning and afternoon term time sessions. Claire Fry. committee@landulphunderfives.co.uk	07718 830149
Village Choir CYC	Thursdays 7 – 8.30pm Chris Bowman christenebowman@hotmail.co.uk	01752 841573
OCTOBER <i>Festival events in italics, details on page 7</i>		
Tues 1 9am	Under 5s Monday—Friday during term time	MHA
Wed 2 10am 11am 2.30pm 2.30pm	Taiji meets weekly Weekly Hopper Shopper (see page 11) Mah Jongg meets weekly at Annemarie Nathan's Short Mat Bowls weekly	LMH LMH LMH
Thurs 3 8.55am 9.45am 7pm 7pm	The weekly village bus to Saltash (see page 11) Landulph Stay & Play, weekly in term time Cargreen Village Choir meets weekly Short Mat Bowls weekly	MHA CYC LMH
Fri 4 10am—12 8pm	Friday Café every week with tea, coffee, soft drinks, hot chocolate and of course cake! Every October Friday and Saturday the Royal William Yard to Saltash Ferry runs (see page 22 for times) <i>Bertie Pearce, comedy magic show</i>	LMH LMH
Sat 5 8pm	<i>Sam Jewison Jazz Trio, Great American Songbook</i>	LMH
Sun 6 10am 6pm 7.30pm	Harvest Festival Thanksgiving, Landulph Cornish Evening Prayer, Halton Quay <i>Kayaking the Northwest Passage with Mark Agnew</i>	PC LMH
Tues 8 2.30pm	Gardening Club: <i>Discover Wild Cornwall</i> —Paul Rendell	LMH
Sat 12 8pm	<i>Oktoberfest with Druzba Klezmer Band</i>	LMH
Sun 13 10am 7.30pm	Morning Praise, St Mellion <i>Inn Theatre Company explore Shakespeare's greatest heroes, villains and lovers</i>	LMH

Tues 15	2.30pm	Good Companions: Clive Bake, Poet and Entertainer	LMH
Thurs 17	6.30pm	Pelynt Choir perform at Botus Fleming Church	BFC
Fri 18	8pm	Mobile Library 12.25—12.45 Coombe Lane <i>Pavel Ralev and Nazrin Rashidova present violin and guitar music from Bach to Dusan Bogdanovic</i>	LMH
Sat 19	6.30pm	Harvest Auction, Rising Sun, Botus Fleming	
Sun 20	10am 10am	Morning Praise, Landulph Holy Communion, Pillaton	PC
Mon 21	6.30pm	Parish Council meeting	LMH
Wed 23	6.30pm	Come to learn about the 2025 Cargreen pantomime, <i>Peter Pan</i> , and offer your skills and/or enthusiasm. sally.worth@gmail.com has more details.	LMH
Fri 25	8pm	<i>The Dalla Duo celebrate the very best of traditional Cornish Celtic music</i>	LMH
Sat 26	8pm	Royal William Yard to Saltash ferry runs daily during half term (26/11—3/12 see elsewhere for details) <i>Vox Beatles celebrate the music of the Fab Four</i>	LMH
Sun 27	10am	Holy Communion, St Mellion	
NOVEMBER			
Fri 1	9am 10am—12	Under 5s every Monday to Friday in termtime Friday Café every week with tea, coffee, soft drinks, hot chocolate and of course cake!	LMH
Sun 3	10am 12—3pm 3pm	Holy Communion, Landulph Come to see the progress in Duchess Green—and help us plant bulbs and trees—every little helps! Cornish Evening Prayer, Halton Quay	PC Duchess Green Halton Q
Wed 6	10am 2.30pm 2.30pm	Weekly Hopper Shopper (see page 11) Taiji meets weekly Mah Jongg meets weekly at Annemarie Nathan's Short Mat Bowls weekly	LMH LMH LMH
Thurs 7	8.55am 9.30am 7pm 7pm	The weekly village bus to Saltash (see page 11) Landulph Stay & Play, Thursdays weekly in term time Short Mat Bowls, weekly Village Choir meets weekly	MHA LMH CYC
Sun 10	10am	Morning service for Remembrance Sunday, Landulph Church	PC

Mon 11	10.30am	Botus Fleming Remembrance event, with contributions from Cargreen Village Choir, Botus Fleming church hall	
Tues 12	2.30pm 6pm	Gardening Club - <i>Essential Houseplants</i> precedes AGM Newsletter AGM, Penyoke Farmhouse. Your support would be appreciated!	LMH
Fri 15		No Friday coffee morning Mobile Library 12.25—12.45 Coombe Lane	LMH
Sat 16	12.15-2pm	Cancer Research Soup and Pudding Lunch. Advance tickets (£12) from Gaye Braund at Tamarind, Penyoke, or Sue Wright at 1 Coombe Lane	LMH
Sun 17	10am 10am 12—3pm	Morning Praise, Landulph Holy Communion, Pillaton Come to see the progress in Duchess Green—and help us plant bulbs and trees—every little helps!	PC
Mon 18	6.30pm	Parish Council meeting	LMH
Tues 19	7 for 7.30pm	Good Companions outing to Exeter, Christmas shopping Film Club winter season starts with <i>Emma</i> (see page 6)	LMH
Fri 22		No Friday coffee morning	LMH
Sat 23		Craft Fair	LMH
Sun 24	10am	Morning Praise, Landulph Church	PC

PARISH COUNCILLORS

Chair	Martin Worth	07949 208055	martin.worth@landulph.org.uk
Member	Martin Ansell	07592 348272	martin.ansell@landulph.org.uk
Member	Gaye Braund	01752 847774	gaye.braund@landulph.org.uk
Member	Philip Braund	01752 847793	philip.braund@landulph.org.uk
Member	Libby Gawith	07836 587046	libby.gawith@landulph.org.uk
Member	Diane Gregory	01752 845423	diane.gregory@landulph.org.uk
Member	Clare Tagg	07866 680971	clare.tagg@landulph.org.uk
Clerk	Katherine Williams	01752 240541	clerk@landulph.org.uk
Cornwall County Councillor for Trematon and Landrake			
	Martin Worth	07949 208055	cilr.martin.worth@cornwall.gov.uk

To receive regular parish council news go to www.landulph.org.uk

100 CLUB WINNERS

August:	1st N Doughty £21	2nd D Masterson £16	3rd A Wright £12
September:	1st E Braund £21	2nd M Booty £16	3rd R Cradick £12

Cargreen Yacht Club Regatta

The Club's annual regatta took place on 14 September and the sun shone all day. Better still, there was plenty of breeze to enable the sailing events to be completed in good time. We had a record 50 boats sailing in the three events. The winners were: Class A with 16 entries – *Tilted* skippered by A and K Whitfield (with CYC's Paul Morris crewing); Class B with six entries – *Shara of*



York skippered by P Noakes; and The Whitesail Challenge with 24 entries (including 11 from CYC) - *Loki* skippered by G Evans. Cargreen's most successful competitor was Rob Stebbing, who came fourth in the Whitesail event. All boats were greeted with a klaxon as they crossed the finish line.

Back at the club, while the results were being calculated, the members, sailors and visitors all enjoyed good food and drinks from the bar with entertainment during the afternoon from the Tavy Tars and into the evening with Cornish Groove Collective.

The festivities went on into the evening and we look forward to doing it all again at the same time next year.

Our thanks go to the many volunteers who organise and help with planning the sailing events, water taxis, food, music, manning the bar etc. Without this help

we could not run these events

Gwenda Keene

Remembrance Day 11 November

Landulph has no war memorial at which to lay wreaths and join the annual national solemn rituals. However, it has a public hall with this history: 'To provide a Memorial to the men of the Parish, who served their Country in the Second World War; Landulph Parish Council had the idea of building a Village Hall. A public meeting held in May 1947 confirmed the idea and fund raising started in earnest.' Eventually the Hall opened in 1970; it has not been used for Remembrance Day events in recent years, if ever. The history of Remembrance Day starts with the impact on families and nations of World War 1's slaughter, and a 'never again' resolve. This would be reinforced by annual remembrance ceremonies and the creation of a new global diplomacy focussed on peace-making. First came the League of Nations in 1920, then World War 2, then the United Nations in 1945.

With tragic new wars around us, we may wonder why reminders of ancient wars have relevance today. When we buy our poppy, we have probably contributed to a military charity. Is that it? Or does it stir even a little sorrow at man's warring inhumanity to man? *'At the going down of the sun and in the morning we will remember them'*.

A service of Remembrance will be held at Botus Fleming Church Hall on Monday 11 November at 10.30am. The Cargreen Choir will sing a selection of songs to mark the day and Landulph Parishioners will be welcome.

Morton Macleod

The Friday Cafe at the Hall

The Friday Cafe will continue through the autumn at the Landulph Memorial Hall after the response to the request in the last Landulph newsletter for volunteers to make cakes and help in the kitchen.

Many thanks to those who have offered; we are very grateful. However, there will be no café on Friday 15 November nor on Friday 22 November. This is due to events taking place in the Hall the following day. We hope you will support them and get your weekly coffee and cake fix and chat at the Cancer Research lunch on 16 November and the Craft Fair on 23 November.

Jo Butcher

LANDULPH COMPUTING

Computer expertise and support services
based in Landulph for home and small businesses

Services include:

- **Advice**
(email, backup, security, virus protection, etc)
- **Virus / malware removal**
- **Software installation / troubleshooting**
- **PC purchase advice**, builds, repairs, upgrades
- **Networking advice**, installation, configuration
- **One to one coaching**

Call me, Chris Isotta,
for a friendly chat about your IT needs or problems.
I have over 30 years of experience in the IT industry
Or, if you prefer, you can send me an email instead

Mobile: 07863 076654

Email: chris@landulphcomputing.co.uk

Website: www.landulphcomputing.co.uk

Introducing the **WOO WOO LOO**

If you have been down to Landulph Church recently, you may have noticed a strange green object with a tall chimney peeping over the hedge. This is the new accessible composting public toilet at Duke Orchard which has been funded by a FIPL grant and built by volunteers. The toilet uses no water, sewage connection or electricity, so is ideal for a field. The cabin was manufactured in Finland and arrived on a very heavy pallet in many pieces. There was quite a bit of head



scratching trying to interpret the instructions – whoever knew a toilet had a terrace! It also required hundreds of nails to be knocked in by hand and many hours of painting the outside and the inside. Thanks to the volunteers who put in so many hours to construct it (see front cover photo).

LET ME WRITE YOUR WILL FOR YOU

I am a retired solicitor

so you know it will be done properly

I always come to your home

so you feel more confident

Couples can protect their home from residential fees

Let me tell you how

I also cover

Powers of Attorney - Living wills

Inheritance tax planning

My prices are reasonable

and there's no vat!

MICHAEL GRUNDY

Churchland Cottage St Dominick

Telephone 01579 351467

A QUALITY SERVICE- A SENSIBLE PRICE

It is open all the time, is odourless and uses no chemicals. You can use it just like a normal loo except that instead of flushing, you add a small quantity of wood shavings (after a poo). All the waste goes into a tank and the liquid evaporates off (that is what the chimney is for).

The solid matter gradually decomposes into compost using a natural aerobic process (the carbon in the wood shavings is part of this). This takes about a year but we have two tanks so we can switch one out when it becomes full and just wait for nature to do its stuff.

If you have any comments or problems with the woo woo loo, please contact Clare Tagg

(clare.tagg@landulph.org.uk).

Clare Tagg

Daisy and Reuben's incredible journey

Hi! Everyone. Our names are Daisy and Reuben. As most of you know we have been fundraising for the last two years for a once-in-a-lifetime trip and experience to Croatia which we recently come back from. As close family friends this trip both challenged us and brought us closer together. We have obtained once-in-a-lifetime experiences as well as memories which we would like to tell you a little about. Our first day we spent travelling. We landed in Split and began to travel to our first camp where our true adventure began! On day two and three we navigated the Zrmanja river, which spans Croatia and is 69km long with rapids which we had to shoot. We spent this night at a wild camp halfway down the river so we could continue our descent the next morning. We cooled off in a naturally formed waterfall and plunge pool.

Once we had tackled the rapids we then moved towards a 6m waterfall which we were sent down in our rafts - this was one of our favourite parts!

Off the river, we made our way to Starigrad, a small town on the outskirts of the Paklenica national park with a population of 2,700 - it was a very simple town. Starigrad can also be translated as 'old town' in Croatian as it is one of the oldest towns in Europe!

On Day Four we began our trek into the Paklenica national park. This park was a former large canyon with water flowing through it. Now it has become a well-known mountainous range popular with experienced climbers. We made our five-hour ascent to a mountain hut deep within the park. Once we had completed a full day of trekking in blazing heat we met our hosts for the next few days, and began to



learn about the Croatian culture and how they lived in this environment. We sat down for a traditional Croatian meal known as 'Grah' and it was delicious!

On day five, we started bright and early at 4:30am as the heat of the midday sun would have been too dangerous to complete the walk in. Once starting our ascent, it was already in the mid 20°C! After a challenging 1,400m incline we reached the ridge of the mountainous range - the view was utterly breathtaking!

Once refuelled with cheese sandwiches we started our descent and managed to complete the climb in just over five hours. We then

freshened up and took in the beautiful views. Later that day we had another traditional Croatian meal, which was also very delicious. The next day, after packing our bags and thanking our hosts, we started our descent back to the river camp where our experience was coming to an end. We set up camp for the final time and sat down and began to take in all the experiences we had achieved together. Our final full day was spent sea kayaking in Starigrad. We paddled up a canyon until we reached a small waterfall and swam and took in the beauty of the surroundings. That night was spent with the team sharing our fondest memories and thanking our leaders for all they had done for us. This is where our trip came to an end. We travelled back to the airport and to the plane, and before we knew it we were back in England to see everyone and share our memories and experiences. We would like to thank anyone who contributed towards the funding of this trip, no matter how big or small. We would not have been able to take this opportunity and experience it together without everyone's support. We will hold this close to our hearts and are so grateful and proud to be a part of this community! From the bottom of our hearts, thank you!
Daisy and Reuben



What's On At St. Mellion



Complimentary 1 Day Pass!

Have you considered becoming a member of St. Mellion Health Club? Enjoy a one day FREE Pass to try out the facilities. Speak to the Membership Team on 01579 352022 to book your taster day. QUOTE LandulphNews
 Terms & conditions apply. Offer available until 31st October 2024 only

Golf Club Membership

Did you know if you come & play either course and decide you would like to become a Golf Club Member, we will refund your Green fee in full!*

Book a tee time now on 01579 352004 & test drive the courses! (*terms & conditions apply)



Christmas Party Nights

Christmas Party Nights from £37.95pp

Our cracking Christmas party nights include a glass of prosecco on arrival, a delicious 3 course meal DJ/Live music & casino tables to keep everyone entertained!



Festive Lunch & Dinner

Lunch 12.30pm to 2pm / Dinner 6pm to 9pm
 2 Courses £23 per person / 3 Courses £28 per person
 Served everyday throughout December



Call 01579 351 351 to book or scan the QR CODE!



NICOLA GREENE

BSc (hons) Podiatry McHs
HPC Registered Chiropodist/
Podiatrist

**Home Visit Practice treating all
your foot care needs:**

- Nail Cutting**
- Corns and Calluses**
- Thickened Nails**
- Dry Cracked Skin**
- Foot Pain**
- Diabetic Foot Assessments**

M: 07786164205
E: nicki_greene@yahoo.com

Greg Khan

**Professional Plastering Ser-
vice**

Over 25 years experience

Internal and external plastering

Damp problems remedied

Lime Render

Artex ceilings and walls flattened

*All work undertaken is guaran-
teed*

Tel: 01752 843622

Mobile: 07577 275950

CHRIS AND DAN BILLING CONTRACTORS

0.75 to 7.5 ton Mini Diggers for hire
with CITB Trained operator
Drainage and Septic Tank Installation
Site clearance
Bulk excavation
Bricked paved Driveways
Landscaping and groundworks

Agricultural Contractor and Garden
Services
Tree Surgery
Garden Clearance
Hedge Trimming
Turfing
Fencing
Seasoned logs for sale

Dan Billing 07725082046

Chris Billing 07980574104



Contact 01752 845234
dcbplanthire@aol.co.uk



Another step towards toll-free Saltash Bridge crossing

Martin Worth, joint Chair of the Tamar Crossings Committee, has said in a statement: 'For the first time in the 60-plus years of the crossing, I'm pleased to say there is now a plan under Tamar 2050 programme to remove the toll booths and move to Open Road Tolling (ORT), similar to the Dartford Crossings. This would use number plate recognition rather than toll booths to levy tolls. The next stage, also agreed by the Joint Committee, would then be to achieve toll-free crossing, or a reduction for locals, once the term 'locals' has been defined. Where, or for whom, will the Act draw the red line?

The previous and current Governments have been asked to support these proposals in several letters from the Joint Chairs. The move would require a change to the primary Act of Parliament to achieve our goals so we can better serve our residents. We have also requested the appropriate funding to support ongoing maintenance. The ball is in the Government's court. In the past, the answer has been 'no!' We await an improved response from the Autumn Statement, Devolution Deals, the Budget and future Road Improvement Strategy statements.'



Steve Holman
Landscape & Fencing Contractor
Patios, paths, drives, fences, lawns, walling and general garden work undertaken.
Burrhills Farm
Carkeel
Saltash
PL12 6NR 01752 849225



FLO GAS
Logan's Logs

**Kiln Dried Firewood
Kindling & Firelighters
Eco Heatlogs
LPG Bottled Gas
Patio, BBQ & Camping Gas
Coal & Smokeless Fuel**

0800 8021 223
sales@loganslogs.co.uk
www.loganslogs.co.uk

Saltash Ferry service extended

Due to its popularity, the Saltash to Royal William Yard (RWY) ferry service is to be extended into October as a weekend-only service. It will also run as a daily service during the Autumn half term.

The ferry has been popular as a commuting/shopping/day trip service operating from the Jubilee Pontoon in Saltash to the RWY in Plymouth. It passes scenic and historic river frontages during the 35-minute journey. A popular option is the out and back 'cruise', which takes an hour and 20 minutes. Services leave Saltash one-and-a-half hourly from 09.45 to 17.15 and from RWY at the same intervals from 10.30 to 18.00. There are onward links to The Barbican, Mount Edgcombe, Mount Batten, Admirals Hard and Cawsand/Kingsand.

The daily service ended on 30 September. The weekend service runs on Friday and Saturday 5 and 6, 12 and 13, and 19 and 20 October. The daily half-term service runs from Friday 26 October to Sunday 3 November. Prices are £5 for adults and £2.50 for children aged three to 15 inclusive. Bicycles £2.50. Tickets can only be bought on the day of travel (either at boarding or on-line) and do not guarantee a crossing time. Full details are at www.plymouthboattrips.co.uk.

MARK FITCH CHIMNEY SWEEP



- * BRUSH & VACUUM
- * CLEAN, RELIABLE SERVICE
- * COVERING ALL
S.E. CORNWALL
- * DISCOUNT FOR
MULTIPLE CHIMNEYS
- * COWLS & GUARDS FITTED
- * STOVES SERVICED

01579 350762

07773 462643

*Call
Mark on:*



The Landulph Newsletter Annual Meeting will be held on Tuesday November 12 at 6.00pm at Penyoke Farmhouse. The meeting will be open to all Landulph parishioners.

The Newsletter committee invites parishioners who would like join the committee and take a role in producing the Newsletter, to attend the meeting or contact a member of the committee, as seen on page 23.

Life Saving Automatic Defibrillators

There are two defibrillators located within our parish, both for public use in an emergency.

1. Landulph Memorial Hall in Fore Street
2. Cargreen Yacht Club, Coombe Lane.

Landulph Memorial Hall defibrillator:

Located adjacent to front doors

To use you are required to input the code 1111 to unlock, and press the green 'tick' button to open for access.

Cargreen Yacht Club defibrillator

Located on the front wall of the building before you reach the front doors.

This unit is left unlocked, and so no unlock code is required.

Please remember in the event that you may need to use one of the above units, that in a cardiac arrest situation: **continuous CPR is essential while someone else goes to obtain the defibrillator.**

Next edition copy date is 15 November 2024. Inclusion of any material after this date will be subject to space available.

Please contact a Group member for more details

Liz Aubrey-Fletcher	01579 350088	lizaf@btinternet.com
Allen Pack	01752 842012	allen.gardendelights@live.co.uk
James Jermain	01752 847546	jamesdjermain@aol.com
Gwenda Keene	07761 969649	gwendakeene@gmail.com
Phillida Jermain	01752 847546	phillidajermain@hotmail.com
Jane Moore	01752 840826	jcm98@btinternet.com
Susan Hassan	01752 840434	sueanddavid1@hotmail.co.uk

The Newsletter Group reserves the right to edit or refuse material. If there are any mistakes, we apologise. Signed articles do not necessarily express the views of the Group.

Letters to the editor or articles can be given to any committee member.
Adverts to Jane Moore.

The newsletter can be viewed at www.landulph.org.uk

If you are a new resident to the parish and would like to write a small article introducing yourself, we would be delighted to hear from you

*Landulph News is produced by Bluemoon Print and Promotions, www.bmpp.co.uk
Please recycle this newsletter with all your normal paper*

PENTILLIE

Castle & Estate

CORNWALL

Upcoming Events

Pentillie Wedding Showcase

Uncover the charm of our stunning venue
for your dream wedding.
Sunday 13th October 2024

Christmas Carols

Get festive with us at Carols in the
Courtyard.
Tuesday 10th December 2024

Host Your Own Event

Pentillie is available to hire for group
lunches, christenings, wakes, presentations
& workshops. Please get in touch.



Bespoke Weddings | Special Celebrations
Private Retreats | Memorable Stays



Pentillie Castle & Estate, St Mellion, Saltash, Cornwall. PL12 6QD
01579 350044 | contact@pentillie.co.uk | www.pentillie.co.uk

Superfit

Carpentry & Building

07970 773819 www.superfit.uk.com 