

# LANDULPH NEWSLETTER



**Your guide to what's happening in the area**  
**Issue no. 115 February/March 2025**

## **Landulph Parish Council Meeting – 16 December 2024**

**Planning** No planning applications again - hurrah. However, in October there were discussions on the apparent inability of the PC to influence local planning decisions. The Chair undertook to investigate. This appears to be a widespread concern as Marazion Town Council had written to the planning department (copied to all local councils in the county) proposing a motion of no confidence in the county planning department. The letter cites the planners' failure to listen to the views of town and parish councils and their lack of enforcement action. The county council member for housing and planning had responded, supporting his department's approach, but our councillors felt that his position fundamentally undermined the concept of planning and local involvement. However, whilst members agreed with Marazion's argument, they felt that a no confidence vote was a bit strong. Marazion's deadline for expressions of support was 28 February; Councillors will think about it over Christmas and address the issue again in January.

**Orchard WG** Report on the website. Lots of planting – even during the power cut! The Cornwall Sustainability Award submission had not won anything, and the standard of some other entries was impressive. The WG plan a 'wassail' event on 26 January after completing tree planting. The FIPL panel will visit on 3 February.

**Parish Council Website** Three options are available – do nothing (but the Google contract expires in January, and the cost of renewing would rise dramatically), switch to a '.gov.uk' domain but keep our existing applications, or lastly to switch to .gov.uk and adopt their applications. Switching completely was recommended - cheaper and better service - but would require effort to transition. 'Landulph.org.uk' could be retained as a community platform, so we'd need a new name for .gov.uk. 'Landulph-pc' was too hyphenated. 'Landulphparishcouncil' was agreed.

**Clerk's remuneration** NJC pay increase and backpay approved. £75 was approved to allow CALC to appraise the clerks' role. Governance & Finance Working Group; On-line banking will be set up with dual authorisation. The clerk will raise payments and one of Councillors G Braund, Gawith or Tagg will counter-sign (providing they are not payee.) Debit/credit cards not required.

**Pavement Damage, Fore Street** The pavement outside Pendean had twice been damaged by a bin lorry as inconsiderate parking of cars opposite reduces the available road width. This could also impact

emergency vehicles. Several options were mooted - double yellow lines, white lines, cones, yellow hatched box, bollards, maybe even a chicane. The PC lost the will to live in considering the options.

**Emergency response to the power failure** Thanks to the yacht club for providing food, and to everyone who helped. The facility to recharge phones was particularly valuable, but some people came just for the company. Apparently, combi-boilers (as at the Memorial Hall) often do not work on generator power; PC will consider a permanent back-up electrical supply. Councillor Tagg recommended we create a system to call at every house in the parish (should be paper-based...no power = no computers/printers!). Compensation will be made by the electricity retailer at a rate defined by the number of high voltage faults they encounter and not the duration of cuts. The retailer defines this themselves...the phrase 'marking its own homework' comes to mind. Councillor Ansell will seek clarification.

**454 bus** Unfortunately the 454 does not attract enough customers. The operator offered to retain the service from April to August 2025 if the PC provided half the funding - £725. Councillor Worth will explore whether St Dominick might be willing to make it a joint service. Councillor Tagg explained that the 454 runs just one day a week - one bus out, one back. Miss it and you're stuck! It will not even connect reliably with trains at Saltash. The alternative is the Hopper bus, where the driver counts you on and counts you back. However, this is essentially a social activity and not suitable for appointments.

**Searle Family Memorial Field** Nothing to report other than that a parishioner had asked about renting the field for horses.

**AOB** Will buses use the priority lane on the Tamar bridge during forthcoming works? Answer – no. The priority lane is for blue light vehicles only. AOB concluded with mince pies and wine. *P Plume*

## Group Travel

Day Trips & Coach Holidays  
Enterprise Park, Midway Road, Bodmin, Cornwall PL31 2FQ

---

### Coach Excursions & Tours 2025

29th March 8th April 6th May 13th-19th May 27th May 11th June 24th June 3rd July	Stitching & Craft Show, Westpoint Geevor Tin Mine & Lands End Enys Gardens, Bluebells <b>Melrose &amp; the Scottish Borders</b> Thorpe Park (book early for tickets) Marwood Hill Gardens, Barnstaple Mount Edgcombe Tiverton Canal Barge Trip
---	---

Visit our website for all our excursions & tours.  
 Call: 01208 77989 for bookings & brochure  
 website: [www.grouptravelcoachhire.co.uk](http://www.grouptravelcoachhire.co.uk)  
 email: [grouptravelcornwall@btconnect.com](mailto:grouptravelcornwall@btconnect.com)

*We wish you a Merry Christmas & a peaceful New Year.*

Bodmin MOT Centre at Group Travel, Enterprise Park,  
Midway Road, Bodmin, Cornwall. PL31 2FQ

Bodmin MOT Centre

01208 77989

Garage Services and MOT Testing Station  
Classes 4, 5 & 7 Servicing & Repairs  
Commercial interim inspections inc. brakes & lights

## **Landulph Parish Council Meeting – 20 January 2025**

With just the Chairman and three councillors attending the meeting due to holiday and work commitments, there were hopes for a short meeting. But the agenda contained some weighty items.

**Parish Rates to rise by 4.9 per cent** The Council approved a Parish Precept of £34,400, a rise of £3,429 over last year or 11.9 per cent. This means a £5.59 rise is the annual rate for a band D property or 4.9 per cent.

Councillors remained calm when the figures showed a red hole in the General Reserves of over £9,000. Chairman Martin Worth explained that this was due to a cash flow issue over payments of grants for the Duke Orchard and Duchess Green project and would correct itself in March. The full breakdown of the Precept is available in the Documents section of the Parish website: [www.landulph.org.uk](http://www.landulph.org.uk).

**Battery Power** Another proposal has been received for a Battery Energy Storage System (BESS) at West Kingsmill. Councillors agreed that a BESS, which stores excess green energy from solar and wind farms, is desirable and the site at Kingsmill is sensible, being close to the Elbridge sub-station.

However Councillor Clare Tagg expressed disappointed that their requests for clarification and further details on this project seemed to have been ignored. Councillor Phillip Braund observed that the development would greatly extend the industrialisation of the sub-station site and almost link into the existing solar farm. It would be clearly visible from Highdown. The Council voted to support the proposal subject to a response to their earlier concerns. Clare Tagg abstained.

**A threat to Neighbourhood Plans?** Cornwall has had its house building quota upped to its highest ever - 8,000 - and will be on the look-out for suitable sites. Martin Worth said it was reassuring that we had a Neighbourhood Plan to resist development, but he was fearful Parish Councils would not, in the future, have much control over planning in their area.

**New website** The Parish is to have a new website, [www.landulphparishcouncil.gov.uk](http://www.landulphparishcouncil.gov.uk). The .gov.uk site will be bigger and better and, best of all, it is being funded with government money. This means the current site, [www.landulph.org.uk](http://www.landulph.org.uk) will be freed up for other parish uses. The Newsletter Group has been suggested.

**Searle Family Memorial Field** This Parish asset continues to be a thorn in the side of the council since it was surrendered by the Callington Cricket Club. Issues with water leaks are ongoing, as is security and maintenance. The pavilion is now insured by the council. There is an urgent need for someone to come up with an idea for the future use of the field.

*James Jermain*

## **A cry for help from the Newsletter Committee**

James Jermain has given sterling service to the Landulph Parish Newsletter Committee and has now stepped down from the committee although, thankfully, he will continue proof reading for us. Thank you, James, for all you have done for the newsletter.

With other members of the committee wishing to step back in the next year or so, we are looking for additional members to join the us to assist in the bi-monthly production of the newsletter. The work is not onerous – we meet six times a year to discuss the next edition of the newsletter and new ideas are always welcome.

Whilst no particular skills are required, we are looking for at least one member of the committee with proficient IT skills to help with putting the newsletter together. We are also in need of a Treasurer who will keep the (limited) accounts and be a point of contact with the advertisers. In addition, it would be refreshing to have some younger villagers join us.

If you would like to learn more, please contact the Chair, Liz Aubrey-Fletcher (01579 350088) or the Secretary, Gwenda Keene (07761 969649).

## **Farming old and new**

A few months ago, Patrick Aubrey-Fletcher wrote about the challenges facing farmers today and how the situation had been complicated by policies introduced by the government.

As a further development of this theme, Morton Macleod will be updating us regularly on the changes to the fields alongside a popular footpath route in the village, and Liz Aubrey-Fletcher has spoken to a local farmer regarding his farming journey.

**Charles Congdon** has lived and worked at West Kingswell Farm all his life. The 40-acre farm was originally purchased by his great grand-father in 1887. Originally the farm was a market garden and orchard with the apples being used to make cider. Over the years more land was acquired and the farm now runs to 140 acres with an additional 360 acres of tenanted land.

Charles remembers working on the farm as a youngster, helping out as his father was not well. Over the years the enterprises on the farm have changed – during the 1960s the orchard was grubbed up as there was no demand for the apples. The market garden ceased in the 1980s and dairy, sheep, arable and potatoes have all been tried over the years.

Foot and mouth saw the end of the sheep enterprise – at that time lambs were being sold for £30 whilst they sell for £200 now. The dairy ceased ten years ago when the introduction of milk quotas

Landulph, Cornwall - Valuable Freehold Lands for Sale

MESSRS SPEAR & PARMER will SELL by PUBLIC AUCTION at the Railway Hotel, Saltash, on FRIDAY October 21st, 1887, at 3.30 o'clock in the afternoon, the fee simple and inheritance of and in all those lands situate in the Parish of Landulph, in the County of Cornwall, in the following lots, viz:-

Lot 1 - All that ESTATE and PREMISES called WEST KINGSMILL, containing 40a. 0r. 26p. of land, now in the occupation of Mrs Meattres.

Lot 2 - All those THREE FIELDS, or closes of land, adjoining the above, called PANSLEYS, now in the occupation of Mr Joseph Richard, and containing 11a. 3r. 30p.

The above are well adapted for fruit growing, many acres being filled with excellent fruit trees of all kinds and strawberry plants.

The properties are about 10 miles from Plymouth and Devonport Markets, and adjoining Kingsmill Quay, where dung and other manure may be landed and produce shipped. The aspect is chiefly southern, and the properties are in good condition of cultivation.

A rare opportunity for investment.

For viewing the property, apply to Mrs Meattres, and further particulars may be obtained of the Auctioneers:

or, as to lot 1, of

Messrs NICOLLS & BLIGHT, Solicitors  
Callington & Plymouth;

or, as to lot 2, of

Mr R HANCOCK, Solicitor, Callington

Dated Sept 27 1887

made profitable farming more difficult for smaller units. Now the farm hosts a beef herd and crops are grown to feed the stock over the winter months.

Like many farms, diversification has become an important part of any enterprise. A parcel of land was compulsory purchased for the electricity sub station and, more recently, more land has been earmarked for battery units to support the substation. In addition, Charles has converted one barn into a holiday let and another into accommodation for Charles and Anne now

that his son is living on the farm.

Charles has two sons, one has followed him into the business and Charles is largely retired now – although he is often called out to help with repairing gates and machinery or moving stock. It was not unusual for Charles to work a 75-hour week and he has found it difficult to adjust to retirement as he is used to keeping busy. His grandson, Max aged six, is very keen on all aspects of farming, and it is hoped that he will follow his father into the business.

There have been many changes in farming over the years, including the increased use of computers for keeping accounts, monitoring stock, applying for grants. As a young farmer, Charles kept his Invoices in a red box ready for payment but nowadays farmers can monitor individual stock on their phones as well as pay invoices and move 'invisible fences' so that stock can have access to fresh grass with drones being used to check the health of crops.

When Charles was growing up on the farm, there were three or four people working full time on the farm with additional staff being

employed at busy times such as harvest and hay making. Everyone would stop for meal breaks and would eat in the farmhouse – although it was hard work, it was a more social environment. Now Charles's son works alone on the farm with additional staff employed as required. Farming has become a more solitary occupation which, together with the challenges facing farmers today, has resulted in more mental health issues.

The challenges facing farmers today include:

- Complexity of support for farmers including the introduction of ELMS (Environmental Land Management Scheme) where farmers will be paid for environment focused projects
- New ruling on inheritance tax
- Climate change, particularly the excessive rain we have experienced in recent years
- Technology which can be helpful but can also be complex and expensive.

Over the years, farms in the village have merged creating bigger units. There has been more housing development, but the shop, post office and pub have all gone.

*Patrick Aubrey-Fletcher*

### **Salvation Army Children in Need Appeal**

Since 2006 Cargreen residents have been donating to this appeal in lieu of sending local Christmas cards. The charity is extremely grateful for the £600 raised in 2024. A full list of donors updated from the December/January newsletter is available from Sylvia Bedbrook, [sylvia.bedbrook@btinternet.com](mailto:sylvia.bedbrook@btinternet.com), tel 07812 108525.

### **Parish Council sets up emergency fund**

At its January meeting the Parish Council voted to include £3,000 in its annual precept for emergency planning for events such as storm Daragh. This might include a generator at the Memorial Hall for use during power cuts to provide power for warmth, cooking, hot water and portable electronic equipment.

*James Jermain*

### **Road Works**

Road closures are possible at certain times between 10 and 28 February, subject to weather conditions, for the creation of a new passing place halfway along Highdown. Thanks to A D Williams for donating the land and giving support.

*Martin Worth*

### **Beware A38 30mph speed limit**

Parishioners should be aware of the temporary 30mph speed limit on the A38 between Carkeel roundabout to Saltash tunnel and bridge. The limit has been introduced by National Highways to cover road improvement works through the tunnel and beyond.

*James Jermain*

## Bulb Planting in Duchess Green

Duchess Green was used by Dan and Peter du Plessis for growing daffodils and when the LOG group took over the field last year there were still some daffodils in the hedges. To continue the tradition of daffodil growing many traditional varieties from the Tamar Valley have been planted, names such as Cargreen, Dan du Plessis, Bere Ferrers and Tamar Fire. Some bulbs were bought with the FIPL Grant and others were kindly donated by Tony Channing and Valerie Taplin. To ensure a succession of flowers, snowdrops, fritillaria, camassia and bluebells have also been planted.



The volunteers have planted about 4000 bulbs by the original hedges, on our new hedges formed from soil from the pond and even alongside our dead hedge. We discovered (with some huge blisters) that bulb planters don't work very well on tough field grass over shillet but the volunteers worked hard to get the bulbs in the ground.

*Clare Tagg*



## **Jane Moore**

As many of you will know, sadly Jane passed away on 13 January 2025 following a short illness.

Jane joined the newsletter committee in 2019 and quickly became the Treasurer, a role which she undertook with enthusiasm, commitment and efficiency. The rest of the committee were pleased to have Jane on board as they knew that they could rely on her to keep the accounts up to date as well as maintaining good relationships with the newsletter's advertisers.

Jane will be much missed and our thoughts and best wishes are with Dave.  
*Liz Aubrey Fletcher*

## **Parish Walks 2024**

The weather for the 2024 Parish walks on 27 December was much better than the last two years: no rain or wind but plenty of mud! The long walk left first with as many dogs as people. The two- and four-legged equally appreciated the new gate at the top of the horse field above Penyoke. Thanks to the PROW Group for installing this in time for the Walks. Despite covering 5.5 miles they were first back to the bar, soup and pasties.

As usual the medium walk was the busiest and, as well as using the new gate, they braved the mud in Duchess Green to admire the new pond and boardwalk bridge. They also visited the beach overlooking Kingsmill lake with views of rather larger bridges



The short walk which included four children, headed down to the Coombe and over the fields via Haye Farm and Saltermill to view the remains of the Tide Mill. The children were on a mission to spot wildlife and were pleased to meet a horse and some very woolly sheep as well as flowers in the garden at Saltermill.

The 50 walkers enjoyed bread with homemade soup (I loved the parsnip, leek and ginger), Cornish pasties, cheese and onion pastries and a drink or two from the bar. They were joined by some others who just wanted some congenial company. Thanks to those who organise and lead the walks, make the soup, serve the lunch and run the bar.

*Clare Tagg*

### **The Coombe to Wayton footpath**

Walking from the Coombe up to Wayton through three fields has always seemed one of the more interesting paths in the parish because the unfenced public right of way goes through cultivated ground with one's legs brushing the crop, or sometimes there are sheep sharing the space.

Doing the walk on 2 Jan 2025 was a bit sparse of inspiration; the bottom field was a sheepless blank canvas, having seemingly been grazed to exhaustion; the muddy path in middle field was treacherous and any deviation through the safer-looking stiff stems of sheep fodder that had been grazed leafless was a hazard course of Gladiator standard. What a relief to stroll with confidence in the flatter top field where sheep safely grazed on what seemed lush grass. The main aim was to visit Haye Farm and get permission for the Newsletter to carry occasional notes about the changing crops in these three fields, with explanatory notes of immense fascination. That is to be developed, but for the moment you might be interested to know that Haye Farm is one of several agricultural businesses owned or managed by Agricola Growers Ltd, a Cornish business with a broad spectrum of food production. Its website, [www.agricolagrowers.co.uk](http://www.agricolagrowers.co.uk), is full of fascinating examples of its many functions and should spark the curiosity of all including our climate group.

*Morton McLeod*



Established in 2002. Callington based cleaning specialist offering carpets & upholstery as well as hard floor cleaning service. I pride myself in being a friendly and experienced professional who endeavours to produce the best available results every time.

Carpets & Upholstery including low moisture process. Hard floor clean & seal including Tiles & grout, Stone eg Slate, granite Limestone. Vinyl, LVT

Telephone: 07905 188459  
0800 3893393  
e-mail: [nevil\\_fresh@msn.com](mailto:nevil_fresh@msn.com)



# Parish Diary February and March 2025

## Contact details for organisers of groups

**Venues:** LMH = Landulph Memorial Hall MHA = Memorial Hall Annexe  
PC = Parish Church, CYC = Cargreen Yacht Club, BFC = Botus Fleming Church

**Contacts for booking** LMH and MHA Landulphhall@gmail.com

<b>Bus (Thursdays weekly) 8.55am from the Quay to Saltash station and 2.35pm from Saltash Fore St to Cargreen 3.10</b>	The 454 runs directly to Saltash station followed by Saltash Wesley Road and St Annes <b>leaving the Quay at Cargreen at 8.55am</b> and arriving at the station at 9.18. Return at 2.35pm from Saltash Fore Street via the station and <b>arriving at Cargreen at 3.10pm</b> . This service may be hailed and is timed to connect with trains towards Plymouth and Penzance. Full details of local services and connections on <a href="https://www.gocornwallbus.co.uk/services#top">https://www.gocornwallbus.co.uk/services#top</a>	
<b>Film Club LMH</b>	3 <sup>rd</sup> Tuesday in winter 7 for 7.30pm John Hall Johnhall1500@gmail.com	01752 841598
<b>Gardening Club LMH</b>	2 <sup>nd</sup> Tuesday 2.30pm Jen Hambly hambly.wayton@gmail.com	01752 846504
<b>Good Companions</b>	3 <sup>rd</sup> Tuesday 2.30pm Wilma Oakes	01752 843784
<b>Hopper Shopper</b> from Cargreen to Tamar View / Waitrose / B&M / Lidl and return	Landulph Wednesday Shopper Hopper runs from Cargreen to Carkeel (11am at junction of Coombe Lane/Fore Street) to Carkeel shops, return at 13:00 to your door - £3 for return trip. The hopper may be hailed en route. hub@CEPL12.co.uk	01752 848348 / 07916 259263
<b>Memorial Hall Cafe</b>	Every Friday 10.15am—12. Coffee, tea, soft drinks, home made cakes on sale. Come for the chat!	
<b>Mah Jongg at Annemarie's</b>	Every Wednesday 2.00—4pm Annemarie Nathan annemarienathan@hotmail.com	01752 844127
<b>Mobile Library Coombe Lane</b>	Every 4 <sup>th</sup> Friday 12.25—12.45 See Mobile Library - Cornwall Council	
<b>Parish Church</b>	For information see <a href="http://tamar7.org/tamar-valley-benefice/churches/landulph">tamar7.org/tamar-valley-benefice/churches/landulph</a> .	
<b>Parish Council</b>	3 <sup>rd</sup> Monday of the month except August, LMH, 6.30pm Details on PC website & village notice board	01752 240541

<b>Refuse Collections</b>		Next fortnightly rubbish collection on WEDNESDAY 5 February, alternating with recycling collections. Food waste collected every WEDNESDAY. Next fortnightly garden rubbish TUESDAY 4 February.	03001 234141
<b>Short Mat Bowls LMH</b>		Wednesdays 2pm, Thursdays 7pm Shirley Kitney tregwheal@yahoo.co.uk	01752 846808
<b>Taiji LMH</b>		Wednesdays 10.00 – 11.00am Helen Manning helenmanning50@hotmail.com	01822 258208
<b>Under 5s MHA</b>		Monday - Friday morning and afternoon term time sessions. Claire Fry. committee@landulphunderfives.co.uk	07718 830149
<b>Village Choir CYC</b>		Thursdays 7.30pm Chris Bowman christenebowman@hotmail.co.uk	01752 841573
<b>FEBRUARY</b>			
Sun 2	10am 10am 10am 3pm	Holy Communion for Candlemas, Landulph Church Morning Praise, Pillaton Worship@Ten Cornish Evening Prayer, Halton Quay	PC  online
Mon 3	9am	Under 5s Monday—Friday during term time	MHA
Wed 5	10am 11am 2pm 2pm	Taiji meets weekly Weekly Hopper Shopper (see page 11) Mah Jongg meets weekly at Annemarie Nathan's Short Mat Bowls weekly	LMH LMH LMH
Thurs 6	8.55am 9.45am 7.30pm 7pm	The weekly village bus to Saltash (see page 11) Landulph Stay & Play, weekly in term time Cargreen Village Choir meets weekly Short Mat Bowls weekly	MHA CYC LMH
Fri 7	10.15am—12  12.25—12.45 7pm	Friday Cafe every week with tea, coffee, soft drinks, hot chocolate and of course cake! Mobile Library 12.25—12.45pm Coombe Lane <i>Village Pantomime! Peter Pan</i> see page 15	LMH  <i>LMH</i>
Sat 8	6pm	<i>Village Pantomime! Peter Pan</i> see page 15	<i>LMH</i>
Sun 9	10am 10am	Morning Praise, St Mellion Morning Praise	PC online
Tues 11	9.30am 2.30pm	Midweek Service, Landulph Church Gardening Club: Talk about Charles Darwin and his plants. Refreshments & raffle. All welcome	PC

Sun 16	10am 10am	Morning Praise, Landulph Holy Communion, Pillaton	PC
Mon 17	6.30pm	Parish Council meeting	LMH
Tues 18	2.30pm  7 for 7.30pm	Good Companions: Chris Harris Corn Dollies/Love to Move Film Club: <i>The Unlikely Pilgrimage of Harold Fry</i> £7 for non members to include a drink. All welcome. <a href="https://landulphfilmclub.org.uk/">https://landulphfilmclub.org.uk/</a>	LMH  LMH
Sun 23	10am 10am	Holy Communion, St Mellion Morning Praise	online
<b>MARCH</b>			
Sun 2	10am 10am 10am 3pm	Holy Communion, Landulph Church Family Service, Pillaton Worship@10 online Cornish Evening Prayer, Halton Quay	PC HQ
Mon 3	9am	Under 5s Monday—Friday during term time	MHA
Wed 5	10am 11am 2pm 2pm	Tajji meets weekly Weekly Hopper Shopper (see page 11) Mah Jongg meets weekly at Annemarie Nathan's Short Mat Bowls weekly	LMH LMH  LMH
Wed 5	10am	Ash Wednesday Communion, Pillaton Church	
Thurs 6	8.55am 9.30am 7pm 7.30pm	The weekly village bus to Saltash (see page 11) Landulph Stay & Play, Thursdays weekly in term time Short Mat Bowls, weekly Village Choir meets weekly	MHA LMH CYC
Fri 7	10.15am—12 12.25—12.45	Friday Cafe every week with tea, coffee, soft drinks, hot chocolate and of course cake! Mobile Library 12.25—12.45pm Coombe Lane	LMH
Sun 9	10am 10am 10am	Holy Communion, St Dominick Morning Praise, St Mellion Morning Praise online	
Sun 9	10am 10am 10am	Holy Communion, St Dominick Morning Praise, St Mellion Morning Praise online	
Tues 11	9.30am 2.30pm	Midweek Service, Landulph Church Gardening Club: Talk tbc. Refreshments & raffle.	PC LMH

Wed 12	6.30 for 7	Landulph Climate Group invite you to an evening looking at the exciting opportunities and challenges in alternatives to fossil fuels. Drinks on arrival, film, Q&A. See p 19	LMH
Sun 16	10am 10am 10am	Morning Praise, Landulph Holy Communion, Pillaton Meet informally online For more info contact <a href="mailto:carolinelake@btinternet.com">carolinelake@btinternet.com</a>	PC
Mon 17	6.30pm	Parish Council meeting	LMH
Tues 18	2.30pm 7pm	Good Companions: speaker Dame Hannah Rogers Film Club <i>Shine</i> £7 for non members to include a drink. All welcome. <a href="https://landulphfilmclub.org.uk/">https://landulphfilmclub.org.uk/</a>	LMH LMH
Sun 23	10am 10am 10am	Contemporary Celtic Worship, St Dominick Holy Communion, St Mellion Morning Praise online	
Sun 30		Mothering Sunday: services tba.	

## PARISH COUNCILLORS

Chair	Martin Worth	07949 208055	<a href="mailto:martin.worth@landulph.org.uk">martin.worth@landulph.org.uk</a>
Member	Martin Ansell	07592 348272	<a href="mailto:martin.ansell@landulph.org.uk">martin.ansell@landulph.org.uk</a>
Member	Gaye Braund	01752 847774	<a href="mailto:gaye.braund@landulph.org.uk">gaye.braund@landulph.org.uk</a>
Member	Philip Braund	01752 847793	<a href="mailto:philip.braund@landulph.org.uk">philip.braund@landulph.org.uk</a>
Member	Libby Gawith	07836 587046	<a href="mailto:libby.gawith@landulph.org.uk">libby.gawith@landulph.org.uk</a>
Member	Diane Gregory	01752 845423	<a href="mailto:diane.gregory@landulph.org.uk">diane.gregory@landulph.org.uk</a>
Member	Clare Tagg	07866 680971	<a href="mailto:clare.tagg@landulph.org.uk">clare.tagg@landulph.org.uk</a>
Clerk	Katherine Williams	01752 240541	<a href="mailto:clerk@landulph.org.uk">clerk@landulph.org.uk</a>

Cornwall County Councillor for Trematon and Landrake

Martin Worth 07949 208055 [crr.martin.worth@cornwall.gov.uk](mailto:crr.martin.worth@cornwall.gov.uk)

To receive regular parish council news go to [www.landulph.org.uk](http://www.landulph.org.uk)

## LANDULPH MEMORIAL HALL 100 CLUB

Thank you for your support over the last 12 months. We had 106 members in total and hope you will continue to support us this year. Fees of £12 are now due.

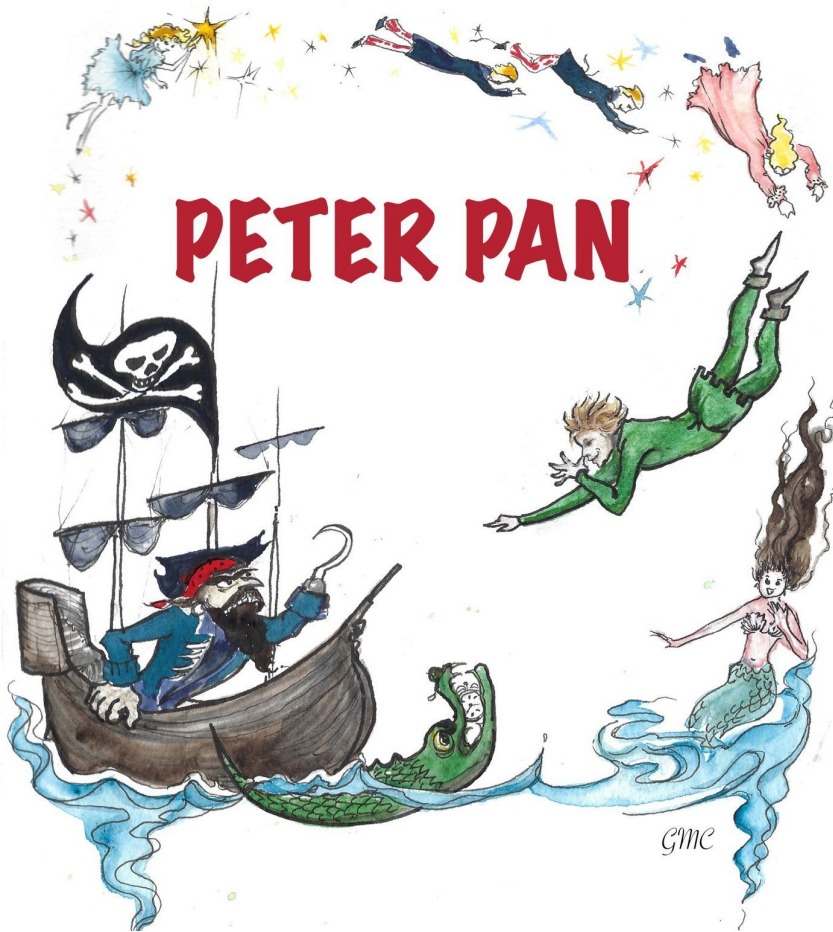
Please either drop in to Sue Wright at 1 Coombe Lane, Cargreen, or phone me on 01752 847533 and I will arrange to collect from you.

If you prefer you can pay by BACS please contact the Hall's Treasurer Gaye Braund on 01752 847774. Thank you in advance for your support.

## 100 CLUB WINNERS

Dec Jo Pearson £24 Helen Manning £17 Margaret Laishley £14 Gary Pickard £10  
Jan Sheila Hosking £21 Amanda Marks £16 Nicola Small £12

Landulph Festival of Music and the Arts  
present  
The Pantomime at Landulph Memorial Hall, PL12 6NF



Friday 7th February at 7pm & Saturday 8th February at 6pm

Adults £10 Children £5

Book now: [landulphfestival.co.uk](http://landulphfestival.co.uk) or 07866 680 971

#### PETER PAN

A Pantomime by Tracy Rogers adapted from the story by J.M. Barrie  
This amateur production of Peter Pan is presented by arrangement with  
Great Ormond Street Hospital Children's Charity & Concord Theatricals Ltd  
on behalf of Samuel French Ltd. [www.concordtheatricals.co.uk](http://www.concordtheatricals.co.uk)

## Storm Darragh

The storm had been forecast, but the winds at times exceeded the highest inland December gusts for 34 years and unfortunately our Parish was on the hit list. The incident was reported at 2.22pm on Saturday 7 December and effectively took out power supplies to 372 properties. The power was successfully restored to all properties at 6.31pm on Monday 9 December. The loss of power for 2 days, 4 hours and 9 minutes undoubtedly affected everyone.

Initially, restoration time forecast by National Grid was to be 6.00pm on Sunday 8 December. Power was, in fact, only restored to 182 properties at 8.28pm on the Sunday, the remaining 190 properties in Cargreen were forecast to be restored at 12.00pm on Tuesday, 10 December. Fortunately, on Monday evening at around 6.30pm the supply was suddenly restored to all properties, 15 hours earlier than planned.

People relying entirely on electricity for heating and cooking were the worst hit and some may now be reconsidering alternative sources for fuel, but the fuel and energy situation is complex. Many people were unable to heat their homes and even though they were using Calor gas

### LANDULPH COMPUTING

Computer expertise and support services  
based in Landulph for home and small businesses

#### Services include:

- **Advice**  
(email, backup, security, virus protection, etc)
- **Virus / malware removal**
- **Software installation / troubleshooting**
- **PC purchase advice, builds, repairs, upgrades**
- **Networking advice, installation, configuration**
- **One to one coaching**

Call me, Chris Isotta,  
for a friendly chat about your IT needs or problems.  
I have over 30 years of experience in the IT industry  
Or, if you prefer, you can send me an email instead

Mobile: 07863 076654

Email: [chris@landulphcomputing.co.uk](mailto:chris@landulphcomputing.co.uk)

Website: [www.landulphcomputing.co.uk](http://www.landulphcomputing.co.uk)

### LET ME WRITE YOUR WILL FOR YOU

#### I am a retired solicitor

so you know it will be done properly

#### I always come to your home

so you feel more confident

#### Couples can protect their home from residential fees

Let me tell you how

I also cover

Powers of Attorney - Living wills

Inheritance tax planning

#### My prices are reasonable

and there's no vat!

#### MICHAEL GRUNDY

Churchland Cottage St Dominick

Telephone 01579 351467

A QUALITY SERVICE- A SENSIBLE PRICE



or oil fired systems, electricity was required to operate these. Candles became an absolute essential and our dependence on smartphones was exposed when batteries went flat. People with solid fuel generally managed to keep warm, and those with Calor Gas heaters and gas cookers were able to cope and to provide some heat. And, of course, good neighbours all helped: hot water bottles were dug out and shared where available, candles and batteries became essential.

It was on Sunday when things were still looking bleak, particularly after it was learnt that the power was not going to be restored until Tuesday, that The Dunkirk Spirit took over. Many volunteers, led by Philip Braund, stepped forward to organise a warm food lunch and some heating for the following day at the Memorial Hall. The Hall boiler was able to be heated slightly using a generator, and a good quantity of food, which was going to deteriorate in the freezers at Cargreen Yacht Club, could be utilised.

Additionally, Charlotte Bell brought a multipoint phone charging unit, which meant that people were able to recharge their smartphones and torch batteries. A good number of people turned up for the food and warmth, comfort, as well as the company. It was later that day that the power came back on, and life got back to normal.



We can now all sit back and ponder on our options in the event any further outages and what can be done to prevent these?

*Allen Pack*

## **Well done Katie!**

Many people in our Parish may have not been aware of the 2024 Christmas Charity Tractor run. This event organised by Cargreen's Katie Billing was held on a bitterly cold December Sunday evening, and raised an amazing £4866, and 344 presents have been given to underprivileged children in our community. This has made a massive impact on young people who may have struggled this Christmas and made their Christmas special at a time in need.



Seventy-five tractors, all brilliantly lit up with Christmas lights, formed a spectacular procession from Hatt roundabout and down Saltash Fore Street. Many spectators braved the cold to witness this spectacular procession. Thanks must be given to Katie, Dan and Chris for the work and effort they put into this event, and to all the farmers, farm workers, families and volunteers, and the Saltash Fire and Rescue, who helped to create this spectacular charity event. It is now the second year that event has been run and, despite some objections and the event being cancelled at the beginning of December, with their determination the event still went ahead.

It was only in November 2023, whilst Katie was chatting with her young son Freddie about Christmas and deprived children and how they could help, when the idea jelled about organising a charity Christmas Tractor Run to Saltash. In that December Katie, with Dan her husband and father-in-law Chris Billing on board, they organised their first event. Hopefully, we can look forward to many more in the future.

*Allen Pack*

## Landulph Climate Spring Talks

Join Landulph Climate Group for our spring talks at Landulph Memorial Hall exploring topics important to Cornwall's future. Doors open at 6.30pm for a 7.00pm start. Refreshments available (donations welcome).



### 12 March - Alternative Energy Sources

With fantastic resources of wind, sun, tides, geothermal heat and critical minerals, Cornwall could drive the whole country's clean energy revolution. However, the UK's 100-year-old grid infrastructure means this potential can't yet be harnessed. Join us to find out more about the exciting opportunities and huge challenges facing us in the move away from fossil fuels.

### 8 April - Nature Recovery in Cornwall

Cornwall Council is working closely with farmers, businesses, communities and environmental organisations on ambitious new plans to restore nature across the county. Nature is under huge pressure and it is important to understand what we can do to restore habitats and support wildlife both in our own gardens and across our parish. Our parish is very important for many wildlife species. Join us to learn more and discuss what we could do as a community moving forward.



## What's On At St. Mellion



### BRAND NEW ~ Lifestyle Membership for £49 per month!

Have you considered becoming a member of St. Mellion Health Club? Enjoy a one day FREE Pass to try out the facilities. Speak to the Membership Team on 01579 352022 to book your taster day. QUOTE Landulph News

Terms & conditions apply. Offer available until 28th February 2025.

### Golf Club Membership

Did you know if you come & play either course and decide you would like to become a Golf Club Member, we will refund your Green fee in full!\*

Book a tee time now on 01579 352004 & test drive the courses! (\*terms & conditions apply)



### Sunday Carvery from £17.95pp

Every Sunday, 12.30pm~3.30pm

Everyone's favourite family tradition, the Sunday Roast at St. Mellion...Carvery style!

1 Course £17.95pp, 2 Courses £21.95pp, 3 Courses £26.95pp, 3yrs ~ 11yrs £10.95pp, Under 3yrs ~ FREE



### Wellness Spa

Did you know you don't have to be a member to be able to enjoy the Elemis Wellness Spa

Treat yourself or a loved one to a delicious treatment or Spa Day Experience

Please visit the website for full treatment menu ~ To book a treatment call 01579 352003



Call 01579 351 351 to enquire or scan the QR CODE!

## NICOLA GREENE

BSc (hons) Podiatry McHs  
HPC Registered Chiropodist/  
Podiatrist

**Home Visit Practice treating all  
your foot care needs:**

- Nail Cutting**
- Corns and Calluses**
- Thickened Nails**
- Dry Cracked Skin**
- Foot Pain**
- Diabetic Foot Assessments**

**M: 07786164205**  
**E: nicki\_greene@yahoo.com**

## Greg Khan

**Professional Plastering Ser-  
vice**

*Over 25 years experience*

Internal and external plastering

Damp problems remedied

Lime Render

Artex ceilings and walls flattened

*All work undertaken is guaran-  
teed*

**Tel: 01752 843622**

**Mobile: 07577 275950**

## CHRIS AND DAN BILLING CONTRACTORS

0.75 to 7.5 ton Mini Diggers for hire  
with CITB Trained operator  
Drainage and Septic Tank Installation  
Site clearance  
Bulk excavation  
Bricked paved Driveways  
Landscaping and groundworks

Agricultural Contractor and Garden  
Services  
Tree Surgery  
Garden Clearance  
Hedge Trimming  
Turfing  
Fencing  
Seasoned logs for sale

**Dan Billing 07725082046**

**Chris Billing 07980574104**



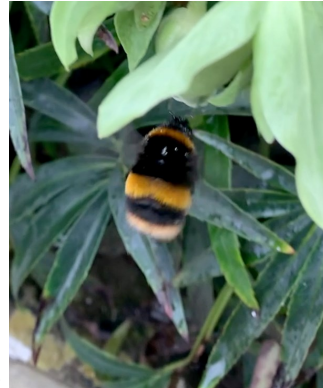
Contact 01752 845234  
dcbplanthire@aol.co.uk



## Plants for Pollinators in Winter

The winter can be a challenging time for our flying insects, and finding a plant that provides nectar can be difficult for gardeners. We're often drawn to cultivated plants for colour and interest at this dark time of the year, perhaps overlooking our native species. On New Year's Day last year I was interested to hear frenzied buzzing around a plant often viewed as a weed, the wonderfully named Stinking Hellebore (Helleborous Foetidus).

Its green bell-like flowers edged with purple are a magnet for all sorts of pollinating insects and is rich in nectar. It loves our damp temperate climate and grows prolifically in my garden. It can be a little invasive but is easy to remove as a young plant. A small clump in amongst our prized cultivars of Hellebores and Cyclamen would be a haven for bees, the level of buzzing around this plant suggests to me that it is almost as important as Ivy as a native species in providing a food source at a crucial time in the year.



*Amanda Marks*



**Steve Holman**  
**Landscape & Fencing Contractor**  
*Patios, paths, drives, fences, lawns, walling and general garden work undertaken.*  
*Burrhills Farm*  
*Carkeel*  
*Saltash*  
PL12 6NR 01752 849225



**Logan's Logs** **FLO GAS**

**Kiln Dried Firewood**  
**Kindling & Firelighters**  
**Eco Heatlogs**  
**LPG Bottled Gas**  
**Patio, BBQ & Camping Gas**  
**Coal & Smokeless Fuel**

**0800 8021 223**  
sales@loganslogs.co.uk  
www.loganslogs.co.uk

## News from Landulph School

Happy 2025! After a very busy festive season, the children have returned to school and have immersed themselves in their new learning. Our topics this term are:

- Class 1 – How can we look after our planet?
- Class 2 – How diverse is Europe?
- Class 3 – Is the World angry at us?



We started off the New Year with a visit from the National Marine Aquarium. Class 3 had a fascinating and engaging science lesson; it was great to see the children's enthusiasm! In January one of our themes was "You've got a friend in me!" We talked about what friendship is, how we can show it to

others, and finished it off by celebrating those who had been good friends that week. We had so many to choose from. We are looking forward to welcoming our grandparents in for Grandparents Lunch next month!

*Karen Ball Headteacher*

## Landulph Under Fives

We welcomed the children back on 7 January after the Christmas break and loved hearing about their festive fun.

The topic for this half term is Transport, and we are looking forward to learning about different types of vehicles. The children have helped to change our role play area into a train station and we have created trains using shapes and practised our mark making skills drawing a vehicle.



## **Life Saving Automatic Defibrillators**

There are two defibrillators located within our parish, both for public use in an emergency.

1. Landulph Memorial Hall in Fore Street
2. Cargreen Yacht Club, Coombe Lane.

### **Landulph Memorial Hall defibrillator:**

Located adjacent to front doors

To use you are required to input the code 1111 to unlock, and press the green 'tick' button to open for access.

### **Cargreen Yacht Club defibrillator**

Located on the front wall of the building before you reach the front doors.

This unit is left unlocked, and so no unlock code is required.

Please remember in the event that you may need to use one of the above units, that in a cardiac arrest situation: **continuous CPR is essential while someone else goes to obtain the defibrillator.**

**Next edition copy date is 15 March 2025. Inclusion of any material after this date will be subject to space available.**

Please contact a Group member for more details

Liz Aubrey-Fletcher	01579 350088	lizaf@btinternet.com
Susan Hassan	01752 840434	sueanddavid1@hotmail.co.uk
Phillida Jermain	01752 847546	phillidajermain@hotmail.com
Gwenda Keene	07761 969649	gwendakeene@gmail.com
Allen Pack	01752 842012	allen.gardendelights@live.co.uk

*The Newsletter Group reserves the right to edit or refuse material. If there are any mistakes, we apologise. Signed articles do not necessarily express the views of the Group.*

Letters to the editor or articles can be given to any committee member .  
Adverts to Allen Pack.

The newsletter can be viewed at [www.landulph.org.uk](http://www.landulph.org.uk)

If you are a new resident to the parish and would like to write a small article introducing yourself, we would be delighted to hear from you

*Landulph News is produced by Bluemoon Print and Promotions, [www.bmpp.co.uk](http://www.bmpp.co.uk)*

**Please recycle this newsletter with all your normal paper**

**Cover picture:** Gwenie Morris, co-ordinator for PROW (Public Rights of Way). She is the link between the village and CORMAC who provided the sign for the badger holes and the materials for this new gate fitted to one of the village footpaths. She seeks out volunteers to do the work: currently villagers are clearing the path along the shore to Neal Point.

# PENTILLIE Castle & Estate

CORNWALL

## Upcoming Events

### Friends Of Pentillie

Year round exclusive garden membership, granting access to 55 acres of Pentillie gardens. Become a 2025 member for just £35 per person.

### Host Your Own Event

Pentillie is available to hire for group lunches, christenings, wakes, presentations & workshops. Please get in touch.

### Coming up in 2025

Keep your eyes peeled and visit our website for updates on Afternoon Teas, Garden Open Days, Outdoor Theatre performances and more!



Bespoke Weddings | Special Celebrations  
Private Retreats | Memorable Stays



Pentillie Castle & Estate, St Mellion, Saltash, Cornwall, PL12 6QD  
01579 350044 | [contact@pentillie.co.uk](mailto:contact@pentillie.co.uk) | [www.pentillie.co.uk](http://www.pentillie.co.uk)

# Superfit

## Carpentry & Building

07970 773819 [www.superfit.uk.com](http://www.superfit.uk.com) 