

# LANDULPH NEWSLETTER



Your guide to what's happening in the area  
Issue no. 63 June/July 2016

## **Parish says 'no' to Spaniards plans**

The Landulph Parish Council has voted to recommend rejection of the latest plans to redevelop the Crooked Spaniards site. The vote was 5 to 0 with the chairman, Gerry Stevenson, abstaining.

Around 60 people attended the Parish Council meeting on 16 May, many of whom expressed strong opposition to the proposals. The plans, produced by BBH Architects for Justin Arnold showed eight housing units in two blocks, one along the bank at the rear of the site, and one along the edge of the north end of the quay. The units are for residential use, not holiday lets, as had been the case in previous applications. Several objectors commented that the height and massing of the development were no less, and in some respects more, intrusive than those in the 2012 proposals which were turned down by the County Council and by a planning inspector on appeal. There was a widespread feeling that the



scale and style of the housing was inappropriate for an Area of Outstanding Natural Beauty, Conservation Area and Site of Special Scientific Interest. Other objections focused on the problems of flooding and car parking.

As we go to press the deadline for public comment has officially passed but the Cornwall Planning department may consider further comments

lodged after the deadline. To view comments already made and add your own contribution go to [planning.cornwall.gov.uk/online-applications](http://planning.cornwall.gov.uk/online-applications) and enter reference number PA16/02479.

*James Jermain*

### **Chairman appointed**

At its Annual Meeting, the Landulph Parish Council reappointed its Chairman, Gerry Stevenson, for another year. Cllr Stevenson said he would stand down at the end of this term as he had now moved out of the parish. Councillors welcomed a new member to the Council, Mrs Marilyn Dennis who lives in Coombe Drive, Cargreen.

### **Neighbourhood plan a step closer**

An extremely successful and well-presented open day on the Landulph Neighbourhood Development Plan was held at the Memorial Hall on 21 May, attended by 120 people. Parishioners were invited to make comments on the key aspects of the proposed Plan and the various display boards became infested with multicoloured 'Post-It' notes. Members of the Plan group were on hand to answer questions and some lively debates sprang up around the hall. The group will now digest the information gathered before moving to the next stage, a housing needs survey and possibly a parish questionnaire. This will focus on the main themes that have been identified. After that a Draft Plan will be published. The group is also keen to encourage 11-18 year old residents to make their views on the parish known.

If you were not able to attend either of these consultations we would welcome your comments by email or via the website

[www.landulphplan.org.uk](http://www.landulphplan.org.uk) or written in the old-fashioned way on a sheet of paper and put through the letterbox of 5 Coombe Drive. There is also a Facebook page on which you can record comments.

A Development Plan is written by the community for the community and is taken into account by Cornwall Council when determining planning applications. Work on the Landulph plan began in February last year and a steering group was formed in May. It is extremely important that the community gets behind this group because the Plan could change the character of our parish forever.



### **Cycling to Saltash**

The St Mellion Parish Council, with the support of the Landulph PC is promoting a cycle way between Callington and Saltash. They are running a survey to judge public support for the scheme and have asked Landulph residents to join in by going to

**[www.surveymonkey.co.uk/r/HG555KG](http://www.surveymonkey.co.uk/r/HG555KG)**

### **Marilyn Dennis is our new Parish Councillor**

We moved into Cargreen December 2013. I have been very happily married to Steve for over 40 years and we have no children. I consider myself to be lucky to have had 3 different working “lives” - all of which have been both challenging and enjoyable! Originally I qualified as a nurse

& midwife, and then went into the field of Occupational Health in industry. This led me into the role of Environmental Health & Safety Manager for a large international cosmetic manufacturer in Hampshire.



In 2001 we had the opportunity to move to the Highlands of Scotland to own a tourism business. We had three self-catering lodges plus a small B&B located in 14 acres of grounds. We were actively involved in the local tourism group that supported village activities. This certainly kept us pretty busy until we retired in 2013 when we moved back south. My interests and pleasures are dog walking, gardening and travel, plus working as a volunteer at Cotehele.



## Cakes For all Occasions



Celebration cakes,  
Traditional cakes,  
Fresh cream  
cakes &  
Cheesecakes,  
All handmade  
To order.



Visit my facebook page:

[www.facebook.com/thecornishsconeco](http://www.facebook.com/thecornishsconeco)  
Or call 07599221241 (Karen Gilchrist)

**Locally produced  
stabiliser beef  
from Park Farm Landulph**



Packs approx 25 kg contain a  
variety of beef cuts packed,  
labelled, and ready for freezing

To order

Phone Richard Brown  
07788 725 748

## GROUP TRAVEL

Enterprise Park, Midway Rd, Bodmin, PL312FQ  
2016 EXCURSIONS

- 23<sup>rd</sup> June Powderham Castle and River Exe  
Cruise
- 7<sup>th</sup>/8<sup>th</sup> July RHS Wisley & Hampton Court  
Garden Show
- 25<sup>th</sup> July Seaton Tramway and Sidmouth  
Donkey Sanctuary
- 7<sup>th</sup> Aug Festival of British Eventing -  
Gatcombe
- 14<sup>th</sup> Aug Jurassic Coast - Sea Cruise to  
Sidmouth
- 17<sup>th</sup> Aug Firework Championships Plymouth
- 27<sup>th</sup>/28<sup>th</sup> Great Dorset Steam Fair
- 2<sup>nd</sup> - 4<sup>th</sup> Sept Burghley Horse Trials

Private hire of our 16 to 70 seater coaches  
also available

**FOR BOOKINGS AND ENQUIRIES**  
**01208 77989 or 01208 72669**  
[www.grouptravelcoachhire.com](http://www.grouptravelcoachhire.com)  
[benneymoon@btinternet.com](mailto:benneymoon@btinternet.com)

**NATHAN LEE  
LANDSCAPING, GARDENING  
AND  
PROPERTY MAINTENANCE**



**ALL JOBS CONSIDERED,  
BIG OR SMALL**

IVYDENE, CARGREEN  
01752 842206  
MOBILE 07855 087022



## **Landulph Under Fives**

We have a super busy half term ahead of us at Landulph Under Fives as we will be preparing for our transition afternoons with Landulph and St Mellion Primary Schools. We have seven children leaving us this year. We have planned to visit Seaton beach in July and have a BBQ lunch at pre-school. Plans are also underway for a Landulph Under Fives summer festival. Watch this space!

We are currently learning all about animals and their habitats. We have been creating many animals to add to our jungle display including lions, snakes and butterflies and have been learning all about the lifecycle of butterflies, hens and frogs. We are still waiting for our tadpoles to change into frogs!

We welcome any donations of shoes, clothes, bags, belts and soft toys for our Bag2School collection. If you have any donations, however big or small, please pass them into Amy at pre-school. Our next collection date is on the 28th of June.

Thank you to everyone who attended our Easter Egg Hunt, a grand total of £300 was raised! Thank you all for your continued support!

*Amy Hilborn*



## **Space 'rocket' trials in Landulph**

The Landulph School space biologists have been busy caring for our experimental rocket seeds which are progressing well on the hall window sills. We had seen identical levels of germination between the two packets, one of which has been into space and the other packet is the control. On day 18 we have just a 2% variation between the

packs and look forward to finding out which pack has actually been into space following the conclusion of our experiment after the May half term. We have been able to fund Attik Dance to join us in school to work with all the children on a weekly basis over the summer term. Ben has been teaching our children to be very creative and understand how to interpret music, using dance.

We hope to take aerial footage of the school and surrounding areas over the summer term. We know what beautiful location our school is in and look forward to being able to share this with the rest of the world. Keep a lookout for this footage on the school website along with an inside tour of the school.

*Marie Beaven-Smith*

## **Gardening Club**

This time of the year is proving busy with lots of plant growth, some desirable and some not, but since weeds are 'misplaced plants', I suppose we should respect them!

The Gardening Club visited Ken-Caro Garden during May. It comprises five acres of very diverse and healthy trees and shrubs, underplanting, granites and ponds. We've decided not to meet in June because various people are away. In lieu we plan to make a trip on Wednesday 10 August. For July, on the evening of the 13th, Valerie and David Taplin are showing us their garden at Kingsmill Farm which is evolving with a lot of interesting plants and many roses. Afterwards, we'll call in on Shirley and Mike Kitney's garden at Tregwheal and finish the evening with some home-made cakes etc. Various local gardens are open in the next couple of months and particularly good are the village walkabouts organised by St. Luke's Hospice Fund Raisers. Gunnislake is on Sunday 19 June from 11 to 4. You can park at the village centre: admission £5; and Harrowbarrow on Saturday 2 July also from 11 to 4, admission £5. The NGS is opening various gardens in Devon and Cornwall and I have information on them, should anyone be interested.

*Jen Hambly*

## **ORGANIC PEST SOLUTIONS**

Using only organic and traditional methods I only specialise in rabbits, moles, rats, mice and squirrels.

If you have any problems with any of



**Phill**

**Tel: 07805 621217**

**Very cheap and sometimes  
free!**

## **Seasoned firewood**



**Hardwood logs**

**Kindling available**

**Free delivery**

don't hesitate to contact Dan  
on 07876672544

## The Landulph Gardening Club Spring Show

After a rather anxious time prior to the show the actual event went really well with increases in exhibits and increased consumption of delicious teas with a similar attendance to last year.

There were some particularly beautiful entries in a very well supported shrub section.

I would like to thank Nan and Bill Doughty for taking on the tricky but delightful task of judging the junior classes, there were some brilliant entries. (see picture above)



And last but not least, rather surprisingly the best in show floral art entry was won by a man. I hope this encourages other guys to have a go.

So I just need to say thank you to everyone who joined in in any way.

Without that commitment there wouldn't be a show. See you next spring.

*Jane Espig*



## **Did you know?**

Did you know that there is an organic farm in Landulph? Eight years ago builder Andy Williams bought farmland from Pentillie estate extending from the Wayton solar farm to Stockadon, the A388 and Paynters Cross, and insisted it be farmed organically. Andy takes overall control while the land is worked by Tom Derham who has been employed on it since 1977 and who kindly made time for this interview. The farm look like any other and many of its activities are no different from traditional methods, but what makes it distinctive is the policy of avoiding the use of manufactured and artificial applications to the soil, animals and crops. It is a mixed farm with a pedigree herd of South Devons and Romney sheep which are raised for slaughter only (no milking) and all crops are used as grazing or fodder for the animals. The farm manure is the only applied fertiliser, and clover is sown with the grasses in order to fix nitrogen in the topsoil.

So what happens if you exclude herbicides, pesticides, hormones, antibiotics and artificial fertilisers? One effect is that crop yields per hectare are smaller than on traditional farms and stocking rates are lower, so less meat per hectare. Routine dosing of livestock with antibiotics and parasite treatments is forbidden while selective treatment according to need is permitted. Tom explained that he routinely sends dung samples to the vet for testing for parasites, and of course antibiotics are used on sick animals. Some fields around Bittleford farm are left as pasture long-term, and on them the sward has developed an increasing variety of wild plants. Since the farm has gone organic, Tom has noticed more birds and insects. Field edges and hedges too are machined less frequently so provide better natural habitats. Under EU regulations, hedge cutting is forbidden from 1 March to 31 September, and this applies to roadside hedges except when road safety is compromised.

On this farm the commercial product is livestock for the organic meat market, with reliance on its own cereal crop for grazing and silage. Most fields are ploughed afresh every 5 years, and each new sowing of cereal and clover has to compete with weeds because killing all plant growth with glyphosate before ploughing is forbidden. So after ploughing, the field is harrowed twice to destroy weed seedlings then after sowing and when the cereal seedlings are firmly rooted, the surface is mechanically raked to destroy residual weeds. All of this effort involves more tractor-hours than on a traditional farm and might seem at odds with 'greenness' but that's one reason for the extra cost of organic food in the shop. Fortunately local demand for top-grade organic beef and lamb exceeds supply and Landulph organic meat finds its public in farm food boxes, hotels and restaurants and even Ocado.

*Morton Macleod*

# GEOFF AIRES LTD

Patios • Brick Paving • Driveways  
Kerb Laying • Groundworks  
Concreting

**01752 844384**  
**07899 805144**

Also  
Road Surfacing Specialists  
Roads • Car Parks • Farm Lanes

Free Estimates

All Work Guaranteed

Accredited Contractor for  
Cornwall Highways



## Higher Chapel Farm Bed & Breakfast Nr. Halton Quay, St. Dominick

A family run dairy farm set within  
the Tamar Valley,

Close to moors, coast and towns

Comfortable en-suite room and  
private room

Home Cooked Breakfast

Private Lounge

Families welcome

Tel: 01579 350894

Web: [www.higherchapel.co.uk](http://www.higherchapel.co.uk)

e-mail: [smjwg@tiscali.co.uk](mailto:smjwg@tiscali.co.uk)

## ServiceCare Domestic Repairs

**Don't Bin it!!!**

**Recycle/Repair/Reuse**

\*Gas/Electric Cookers

\*Washing Machines

\*Dishwashers

\*Fridges & Freezers

\*Tumble Dryers/Microwaves

\*Competitive Rates

\*Fixed Inspection Fees

\*Estimates & Advice

\*All work Guaranteed

\*Local Friendly Engineer

**Phone 01822 832657**

**Mobile 07790842227**

[www.servicecare.co.uk](http://www.servicecare.co.uk)

GAS SAFE 2827437

## Landulph Festival

### Become a Landulph Festival Friend

For £20 you can become a Friend of the Landulph Festival 2016 and enjoy these special benefits:

- A reduced price season ticket to all the festival events for £60.00
- An invitation to the 'meet the performers' party
- Find a friend, when a friend you have introduced pays their joining fee you will also get £5 off your already reduced season ticket - and most importantly a chance to help put the festival on a secure financial footing so that we can book top class performers for this year's festival.



Contact Jo Butcher ([jobutcher@hotmail.co.uk](mailto:jobutcher@hotmail.co.uk)) or see the festival website for more details



## Fix - I - T

### Computer Help

Virus Removal & Immunization  
Maintenance and Upgrading  
Training for all Requirements  
PC & Network Installation

[www.fix-i-t.net](http://www.fix-i-t.net)

01752 316368

[help@fix-i-t.net](mailto:help@fix-i-t.net)

Graham House

07778429685

## NICOLA GREENE

BSc (hons) Podiatry MChs

HPC Registered  
Chiropodist/Podiatrist

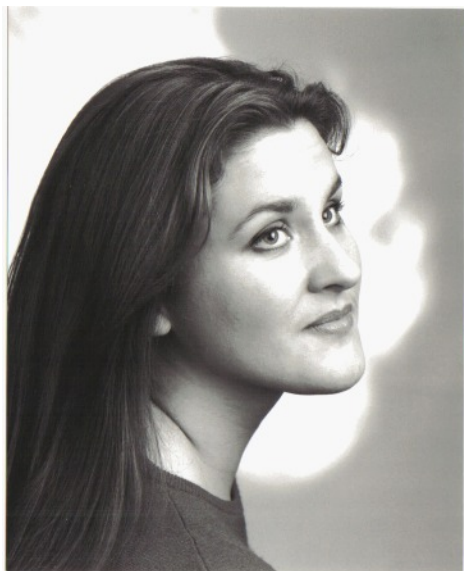
Home Visit Practice treating all your  
foot care needs:

- Nail Cutting
- Corns and Calluses
- Thickened Nails
- Dry Cracked Skin
- Foot Pain
- Diabetic Foot Assessments

Tel: 01752 291565 or 01579 590027

M: 07786164205

E: [nicki\\_greene@yahoo.com](mailto:nicki_greene@yahoo.com)



### **New Director for Village Choir**

Shelley Coulter-Smith has agreed to take on the Village Choir in June. Liz Saudek, who has put an enormous amount of work and energy into Thursday evenings, will be taking her last rehearsal on 23 June. Liz has made a stellar contribution to the musical life of the village over the last couple of years, but feels that the time has now come to pass on the baton.

So what will this change of helm mean to our 19 singers? Shelley's background gives us a clue. Born in Oxford in 1973, Shelley graduated from the Royal Northern College of Music and has performed in a wide

range of opera productions, both modern and classical, at the Savoy Theatre in London, and at Glyndebourne. She enjoys a wide range of music, including jazz.

Shelley is looking forward to her involvement with the choir, bringing her experience of working with the county youth choirs and school-based singing groups, as well as vocal technique gained from her years as a classical soloist and chorister in the various opera companies.

Hoping to run the choir in alignment with the school terms, Shelley is keen to explore new repertoire from madrigals and part songs to pop mash-ups, giving each member of the choir a chance to suggest and explore all musical genres.

Do please come along to the Yacht Club on a Thursday evening; your first visit is free! This is a wonderful musical opportunity, right on our doorstep. Why not give me a call to find out more?

Richard Bowman 01752 841573

### **Cornwall trounces Devon in Mud Cricket Match**

Aussies fill your tucker bags, England stiffen the upper lip, the Cornish Mud Cricketers are on the move. In a thrilling, if rather one sided match, the Cornishmen, aka the Cargreen Yacht Club beat the Devonians, aka the Weir Quay Sailing Club, by a margin of 10 to 1. The Devonians took their penalty like the men, women and children they were, and ate their cream teas in the Cornish style.

The first Tamar Test was staged on Saturday 9 April, on a shillet bank just above Halton Quay which only dries out (briefly!) on very low spring tides. The match was preceded by a hail storm, the Cornish Wreckers morris men, barbecues at North Hoo and Chapel Farm and the singing of *Trelawney*. As the bank appeared, teams were ferried out by support boats and wickets set the regulation chain apart. Fielding at 'deep' mid-wicket and 'deep' mid-on was by canoeist and water dog.



Amid much hilarity the least important factor appeared to be the rules and when the tide returned somewhat earlier than astronomical predicted, the teams gratefully retreated to their respective 'kingdoms' for well-earned refreshment, remembering to put the jam on before the cream. There is a threat that the event may be staged annually.

*James Jermain*







### **And they're off...**

The summer season of white sail racing from Cargreen Yacht Club, has started with Richard Bowman's Soling *Emma* holding a comfortable series lead after two races.

The Challenge is a relaxed form of racing with similarities to a time trial where yachts start at intervals to avoid close quarters racing through crowded moorings. Sixteen boats have signed up for the season although several are not yet

ready to race. *Emma* leads with a first and second place followed by Rob Stebbing's International Canoe and Tony Head's *Triple Venture James Jermain*

### **Regular coach service to Saltash and Callington?**

Cottons Coaches would like to offer a weekly service for residents of Cargreen and Landulph. This could also lead to trips further afield including, perhaps Liskeard, Tavistock and others. The offer depends purely on feedback from interested parties. Please contact Annemarie Nathan on 01752 844127.

### **Peggy Dawe remembered**

The Anniversary service in the Methodist Chapel on Sunday 8 May was a very sad occasion for the members at Landulph as Peggy Dawe suddenly passed away on the 5 May. Alan Libby began the service by paying tribute to her before a minute silence was observed. She will be sadly missed by everyone, especially for the soups and sweets she prepared for the lunches.

The lunches will continue on the first Wednesday of the month. Barry and Karen Richards' Highcroft gardens will be open on Sunday 7 and 21 August 1.30pm to 5.30pm. Cream teas will be served in the Schoolroom from 2.00pm to 5.00pm.

### **Cleaner & domestic help**

Friendly and flexible. Happy to carry out any **cleaning** or **domestic tasks**, light **garden work** and **DIY** where required.

Please call Emma on:

07985540886

01752 396505



# Your Local Estate Agents

Selling & Letting homes throughout South East Cornwall

team

## With Local Expertise

we are the most experienced estate agents in South East Cornwall selling and letting homes for over 30 years

## Giving you National Coverage

with over 300 Team Offices Computer linked Nationwide & on more websites than any other agents.



**FOR A FREE VALUATION**

Telephone us on **01752 850440**

[www.henningsmoir.com](http://www.henningsmoir.com)

### LET ME WRITE YOUR WILL FOR YOU

I am a retired solicitor

so you know it will be done properly

**I always come to your home**

so you feel more confident

**Couples can protect their home**

from residential care fees

let me tell you how

I also cover

Powers of Attorney– Living Wills

Inheritance tax Planning

**My Prices are reasonable**

and there's no VAT!

**MICHAEL GRUNDY**

**Churchland Cottage St Dominick**

**Telephone 01579 351467**

**A QUALITY SERVICE - A SENSIBLE PRICE**



**Steve Holman  
Landscape & Fencing Contractor**

*Patios, paths, drives, fences,  
lawns, walling and general  
garden work undertaken.*

*Burrhills Farm  
Carkeel  
Saltash  
PL12 6NR*

*01752 849225*



## **Aerial Solutions**

Aerial & Satellite specialist

Freeview Aerial Upgrades

Extra Points:

Telephone extensions

Competitive Prices

*Contact Mike Pendered*

*01752 294386*

*Mobile 07745 027 625*

**moorland fuels**  **Now Delivering  
to Your Area.**  
part of your landscape

Great Prices on:

- Heating Oil & Tractor Diesel
- Oil Tank Cleaning
- Boiler Servicing
- Coal
- Lubricants
- Oil Tank Replacement & Installation



[www.moorlandfuels.co.uk](http://www.moorlandfuels.co.uk) 01837 55700

## **CHRIS AND DAN BILLING CONTRACTORS**

0.75 to 7.5 ton Mini Diggers for hire  
with CITB Trained operator

Drainage and Septic Tank Installation

Site clearance

Bulk excavation

Bricked paved Driveways

Landscaping and groundworks

Agricultural Contractor and Garden  
Services

Tree Surgery

Garden Clearance

Hedge Trimming

Turfing

Fencing

Seasoned logs for sale

**Dan Billing 07725082046**

**Chris Billing 07980574104**



Contact 01752 845234  
[dcbplanthire@aol.co.uk](mailto:dcbplanthire@aol.co.uk)



## Landulph Village Fete

The Landulph Parish Fete will be held on Saturday 6 August this year in and around the Church. Everyone is welcome to this friendly get together with games, competitions, lots of tasty home-made food and crafts to buy and many other stalls. There will be face painting, ice creams and, of course, delicious cream teas.

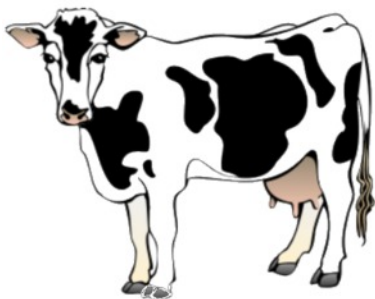
If you can't be there and would like to make a donation towards the cost of upkeep of the fabric of our lovely church, the churchwarden would be very grateful.

*Richard Hosking (07850 983771)*



## Open Farm Sunday

The 'Archers' audience will know that Sunday 5 June is Open Farm Sunday, when farms all over the UK invite visitors to come and see their animals, crops, machinery, and if you're lucky, to see working sheepdogs and sheep shearing.



Nearby farms include Markwell Farm, , PL12 5EQ which will be open from 11am to 4pm, and Deer Park Farm, Luckett, PL17 5NW. For more details about each farm's entertainment see [www://farmsunday.org](http://www://farmsunday.org) .The kids loved Markwell last year.

### Friendly, reliable, reasonable local builder .....

- Carpentry
- Plastering
- Tiling
- Facia & Sofits
- Painting & decorating
- Portable Appliance Testing (PAT)
- All aspects of Kitchen & Bathroom design & refit (including electrics & plumbing)



**Contact David Mills**  
**07714 727766 or**  
**01752 201556**

[www.dmdevelopments.net](http://www.dmdevelopments.net)

**12 years experience,  
no job too small**

## Cargreen Rainfall

Total Rainfall March 82.9mm

Number of days 6

Wettest day 3<sup>rd</sup> 25mm

Total Rainfall April 26.3mm

Number of days 8

Wettest day 8<sup>th</sup> 5.2mm



Data kindly produced by Ken Eastment

## Cargreen Cancer Group

The AGM for the Cargreen Cancer Research UK Group will be held on 25 July. We welcome new members to our fundraising group so please contact Gaye on 01752 847774. We aim to put on a couple of fundraising events each year.

On 24 September we will be holding a Curry supper at Landulph Memorial Hall. More details will be in the August Landulph Newsletter.

*Jo Butcher*

### Greg Khan

#### Professional Plastering Service

*Over 25 years experience*

Internal and external  
plastering

Damp problems remedied

Lime Render

Artex ceilings and walls  
flattened

*All work undertaken is  
guaranteed*

**Tel: 01752 843622**

**Mobile: 07577 275950**

### MARK FITCH CHIMNEY SWEEP



- \* BRUSH & VACUUM
- \* CLEAN, RELIABLE SERVICE
- \* COVERING ALL  
S.E. CORNWALL
- \* DISCOUNT FOR  
MULTIPLE CHIMNEYS
- \* COWLS & GUARDS FITTED
- \* STOVES SERVICED

01579 350762

07773 462643

*Call  
Mark on:*





## **Landulph Lively Ladies**

Fifteen ladies met in May and planned a lively programme for the next few months. We had a cake stall at the Big Breakfast and were delighted with the interest we received.

Next meeting is on Tuesday 7th June at 7.30 pm in the Hall Annex. Ann and Emma Hall will show us how to plant hanging baskets and we plan to celebrate summer with Pimm's, Strawberries and Scones.

No membership formalities; just join us on the evening. £3 on the door.

*Jennie Rayment*

## **Landulph Memorial Hall 100 Club**

The 100 Club is a fund-raiser for the Hall with three cash prizes a month and a fourth prize in the Christmas draw. Currently there are fewer than 100 participants so why not join in now? The cost is just £1 per month payable in February as a lump sum of £12. But you can join now for the remaining months this session for just £7.

The more people who join the higher the monthly prizes and the more support towards the upkeep of this valuable asset. Please contact Rose Cradick on 843257 or Sue Wright on 847533 to bag one of the few remaining slots.

## **Next edition copy date is 15 July. We cannot guarantee to publish anything received after that date**

Please contact a Group member for more details

James Jermain	01752 847546	jamesdjermain@aol.com
Morton Macleod	01752 846520	mortonmacleod@doctors.org.uk
Sylvia Bedbrook	01752 844519	sylvia@bedbrook.co.uk
Allen Pack	01752 842012	allen.gardendelights@live.co.uk
Tim Clarke	01752 842388	clarke.fernleigh@btinternet.com
Becky Reep	01752 840815	becky.reep@btinternet.com

*The Newsletter Group reserves the right to edit or refuse material. If there are any mistakes, we apologise. Signed articles do not necessarily express the views of the Group.*

Letters to the editor or articles can be given to any committee member or e-mailed to jamesdjermain@aol.com Adverts to [clarky1955@gmail.com](mailto:clarky1955@gmail.com)

The newsletter can be viewed at [www.landulph.org.uk](http://www.landulph.org.uk)

If you are a new resident to the parish and would like to write a small article introducing yourself, we would be delighted to receive it.

*Landulph News is produced by Bluemoon Print and Promotions, [www.bmpp.co.uk](http://www.bmpp.co.uk)*

**Delivery of the newsletter** is by willing volunteers. We are very grateful to them.  
New volunteers are always welcome



**Jason Reep**

8 Coombe Drive

Cargreen

Saltash PL12 6PD

07970 773819

jason.reep@btinternet.com



**Superfit**

Carpentry & Building



**Pentillie**  
CASTLE & ESTATE



**This Summer at Pentillie!**

**Eat the Seasons – 5 Course Dinners**

*Celebrating the best of our local produce, much from the Pentillie Estate!*

Saturday 21<sup>st</sup> May, Tuesday 28<sup>th</sup> June, Thursday 21<sup>st</sup> July. £39.50pp

**Gardens Open for Children's Hospice South West**, Sunday 22<sup>nd</sup> May, 12pm – 4pm. £6.00pp

**Guided Garden Tours**, Thursday 30<sup>th</sup> June & Thursday 14<sup>th</sup> July, 2pm. £16.50pp

**Pen'Grillie' BBQ Competition & Local Food Fest**

Sunday 10<sup>th</sup> July, 11am – 6pm. £6.00pp

**Outdoor Theatres** Adults: £15, Child: £10, Family: £43

**Roald Dahl's Danny the Champion of the Word**, Sunday 24<sup>th</sup> July, 5pm

**Much Ado About Nothing**, Wednesday 3<sup>rd</sup> August, 7.30pm

**Sense & Sensibility**, Tuesday 16<sup>th</sup> August, 6.30pm

**For more details on any of the above please contact the Castle Office on  
01579 350044 or visit [www.pentillie.co.uk/events](http://www.pentillie.co.uk/events)**

**Pentillie Castle, St Mellion, Cornwall, PL12 6QD.**