

Carbon neutral Cornwall 2030

My world. Our planet.

 www.cornwall.gov.uk/climatechange



Councillor Martyn Alvey
Landulph Parish Climate Action Group
7th March 2022



Cornwall Council - Climate emergency

The risks in Cornwall

Disadvantaged and vulnerable most likely to be impacted



Vulnerable coastline



Seasonal changes will **impact food chains**



The motion: January 2019



Declare a 'climate emergency'



Lobby for resources and powers



Prepare an Action Plan towards carbon neutrality by 2030
(published July 2019)

CORNWALL AND ISLES OF SCILLY ENVIRONMENTAL GROWTH STRATEGY

2020-2065 | Natural foundations for a green recovery

How we reduce waste • How we live • How we create and use energy • How we adapt
How we travel • How we consume • How we work • How we enhance our environment

Ecological emergency

Deliver nature recovery and economic growth



Three challenges

Climate emergency

Cut emissions to keep global temperature rises below 1.50C



Environmental adaptation

Adapt to changing environment



Three strategic responses

Nature Recovery Plan

Enhanced biodiversity, ecosystem service resilience and access to green spaces

Target: 30% of land and seas managed for nature by 2030

CORNWALL &
ISLES OF SCILLY
LOCAL NATURE PARTNERSHIP

Climate Change Action Plan

Create conditions for change to reduce our emissions to net zero

Target: Net carbon neutral by 2030

Cornwall and Isles of Scilly
Leadership Board

Local Flood Risk Management Strategy

Create conditions for resilient communities to adapt to a changing climate

Strategic Resilience
Board



MAJOR THREATS | Environmental crises threatening our prosperity

**Climate
Emergency**



Emissions pushing global temperatures above 1.5°C towards climate breakdown

**Ecological
Emergency**



Habitat degradation and loss risking mass extinctions & ecosystem service breakdown

**Natural
hazards**



Increasingly frequent and more extreme weather events and accelerated coastal change

TACKLING PRESSURES | Cutting our carbon, resource and ecological footprints & our exposure to risk

**Cutting our
emissions**



Target: A Carbon Neutral Cornwall with net zero emissions by 2030.

**Cutting waste &
resource use**



Target: -10% in household waste & +50% increase in waste reused, recycled or composted by 2030.

**Restoring
nature**



Target: 30% of our land and seas is well managed for nature by 2030.

**Boosting our
resilience**



Target: Improved resilience for our most vulnerable places by 2030.

MAINTAINING ASSETS & ACCESS | Protecting & enhancing local assets to adapt to residual pressures, for the benefit of all

**Our Natural
Assets**



**Our built
assets**



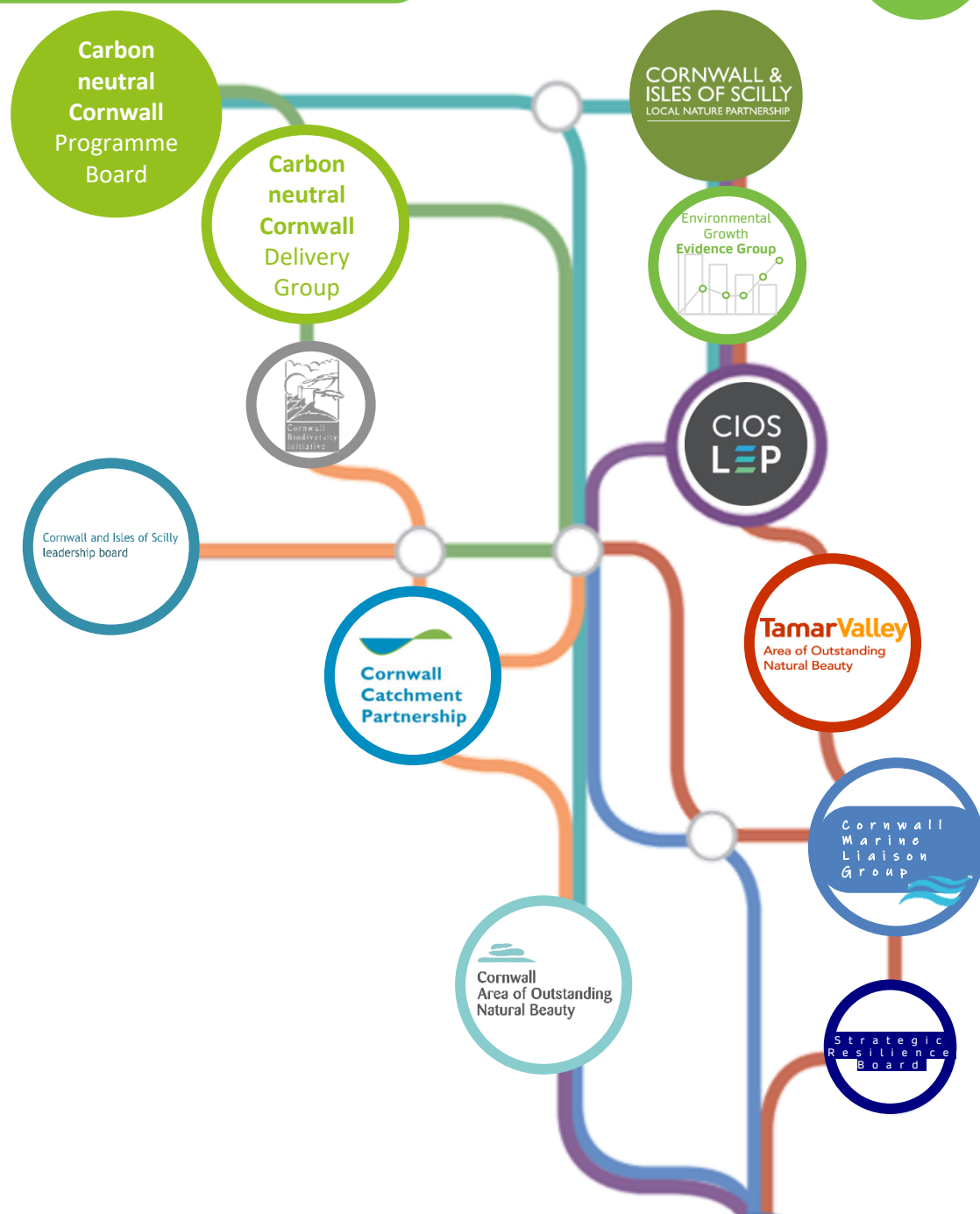
**Our historic
assets**





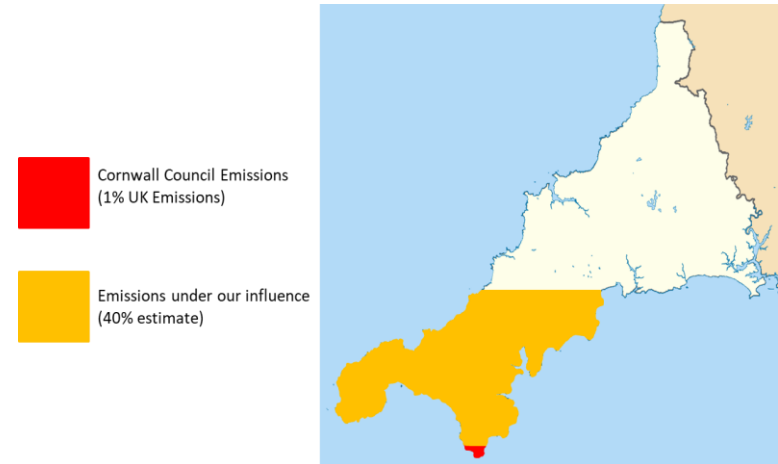
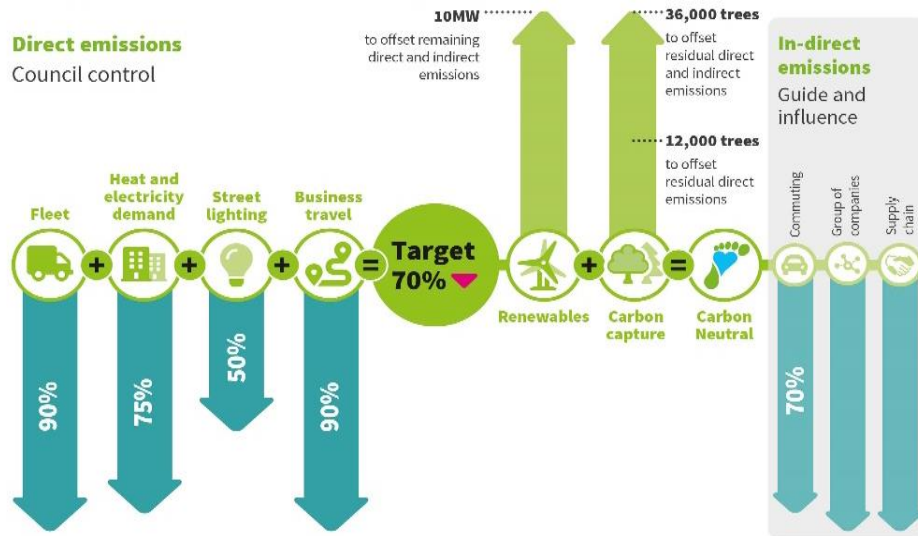
Including...

- Climate Change Programme Board & Delivery Group
- Cornwall & Isles of Scilly Local Nature Partnership
- Nature Partnership-Economic Partnership Liaison Group
- Evidence Group, Biodiversity Initiative, Catchment Partnership & Marine Group
- AONB Partnerships
- Links to Local Councils
- National Groups: COP26 Advisory Group, UK100, Resilient Recovery Taskforce, County Councils Network Climate Lead, CIIA Climate Change Panel.

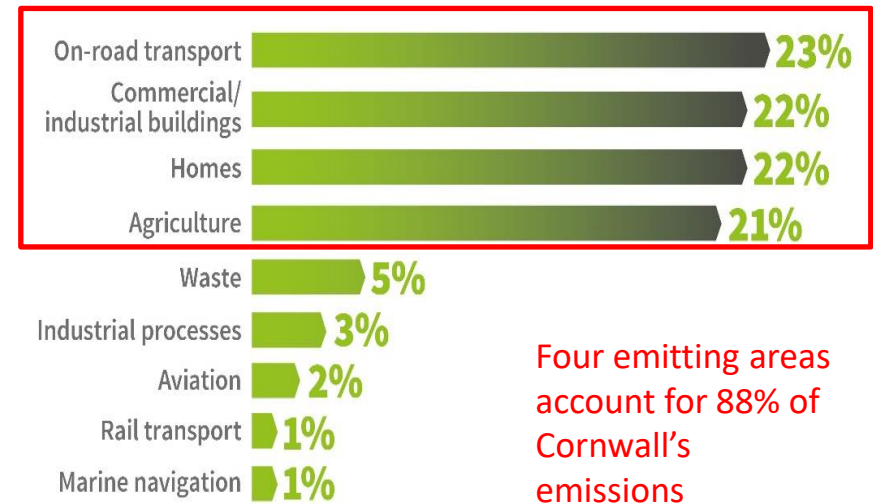
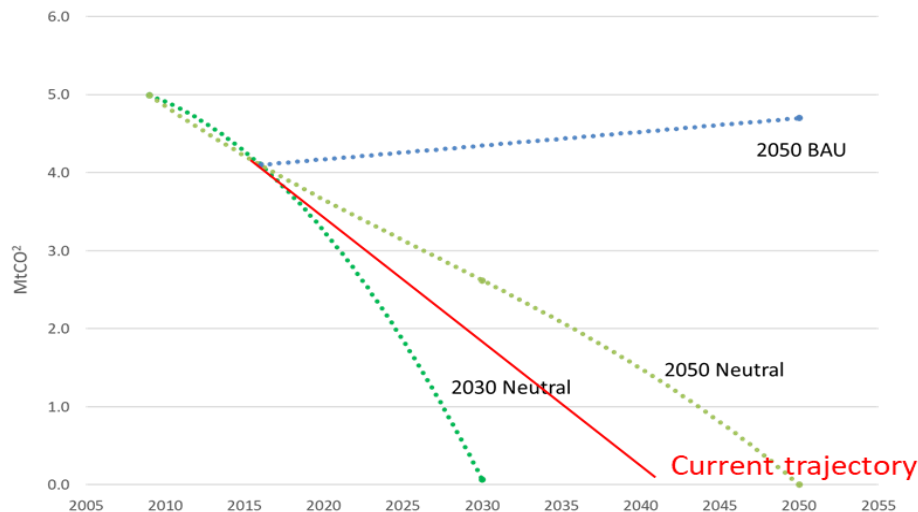


Organisational and systems leadership

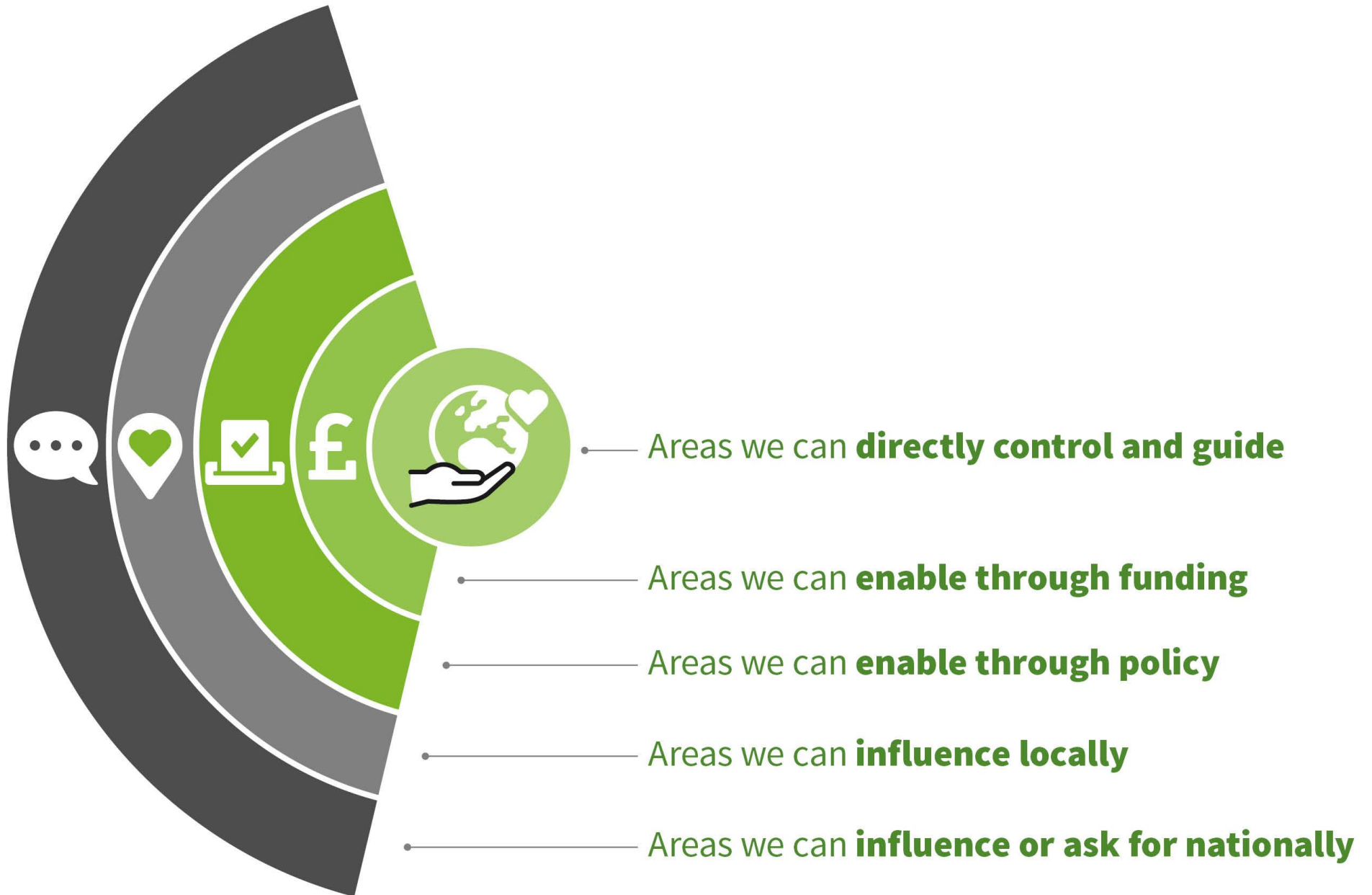
Leading by example to become a carbon neutral council and facilitating local system change....



Working across boundaries to respond to Cornwall's wicked issues...

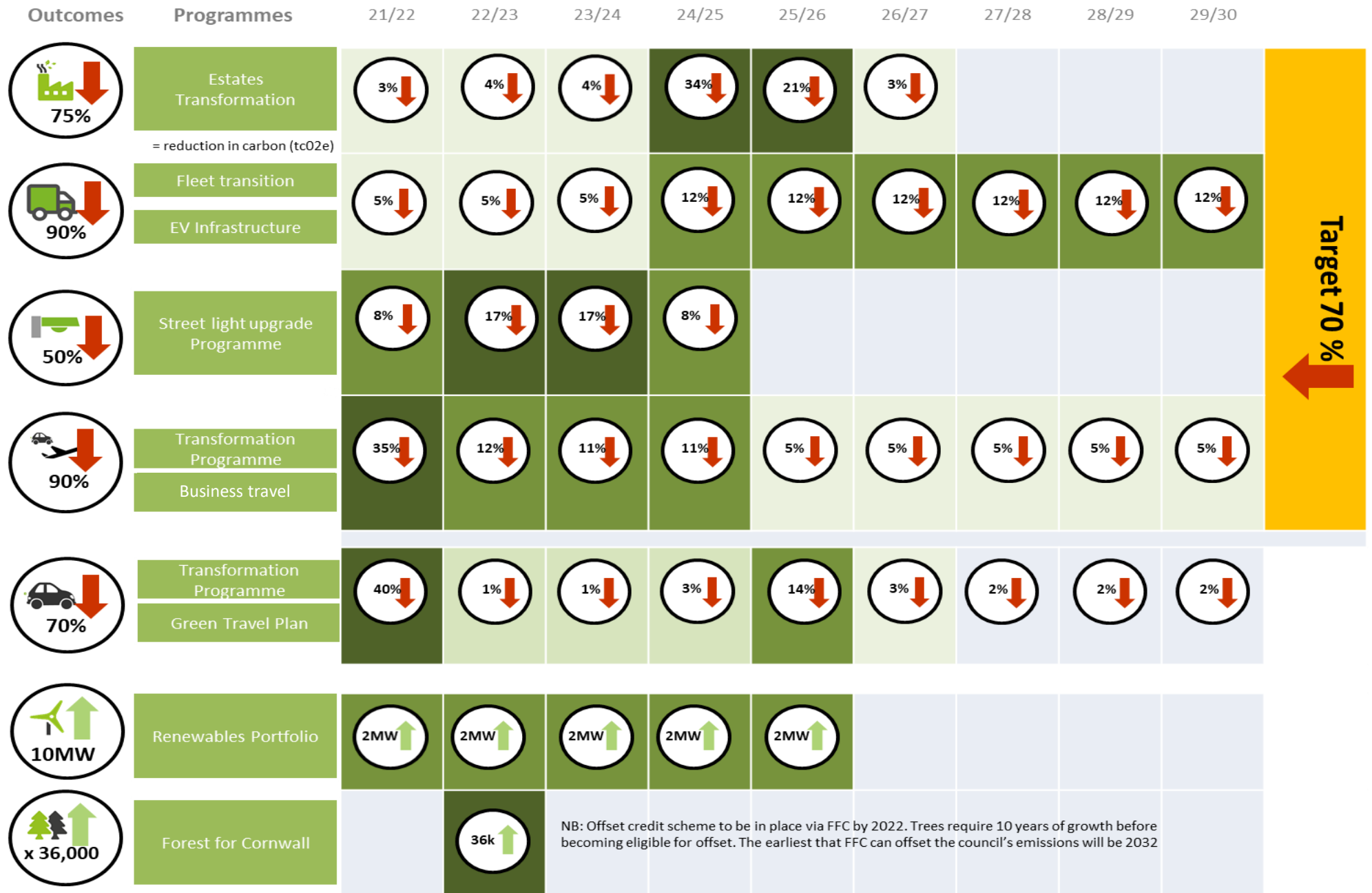


Our role in a Carbon Neutral Cornwall

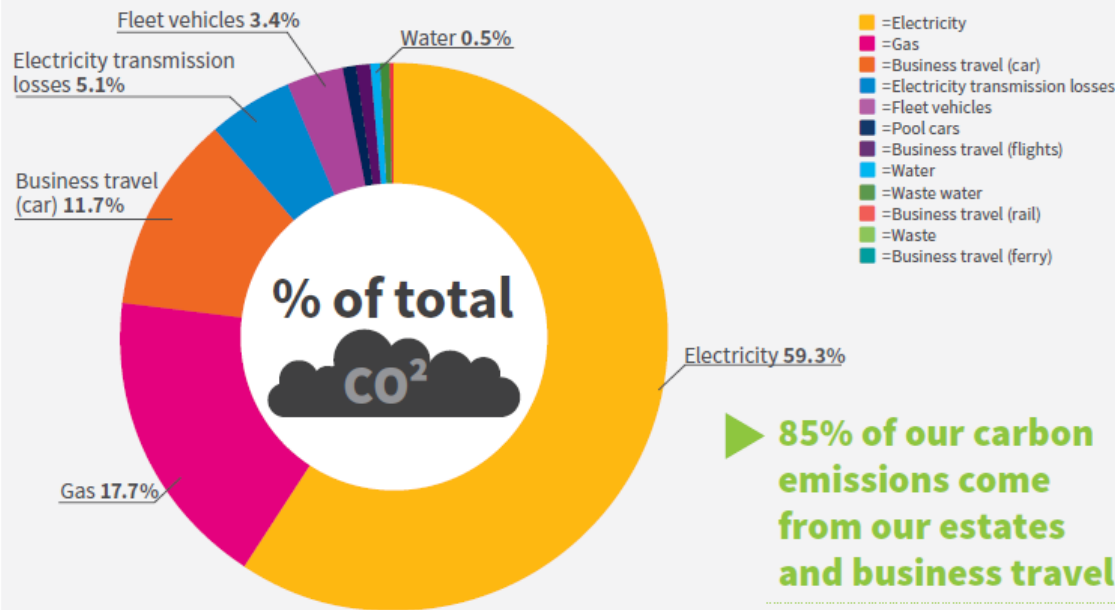


My world. Our planet.

Roadmap to a carbon neutral council



Cornwall Council Carbon Emissions



Our estate creates **77.5% of our emissions** through our electricity, gas and water use



Business travel equates to **17% of emissions** providing **an easy win** in terms of **both financial and carbon savings**



In 2019/20, Cornwall Council spent:

- ▶ **£4.3m** on electricity
- ▶ **£500k** on gas
- ▶ **£700k** on water

In 2019/20, we also printed



21 million pages...

... at a cost of **£280,000**

Business travel by Directorate

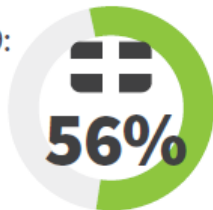


- = Adult Social Care 16.03%
- = Customer and Support Services 9.52%
- = Economic Growth and Development 12.03%
- = Neighbourhoods 22.05%
- = Together for Families 36.80%
- = Wellbeing and Public Health 2.56%

Supply Chain Overview

Total spend FY 18/19:

£785m



of what we spend externally is with **Cornish suppliers**

UK average spend with local suppliers is approximately 25%

External supply chain **65% of** Council's Gross Spend



47% of external supply chain spend with top 20 suppliers (£355m)

Total number of suppliers **5,768**

32 of these are strategic and critical

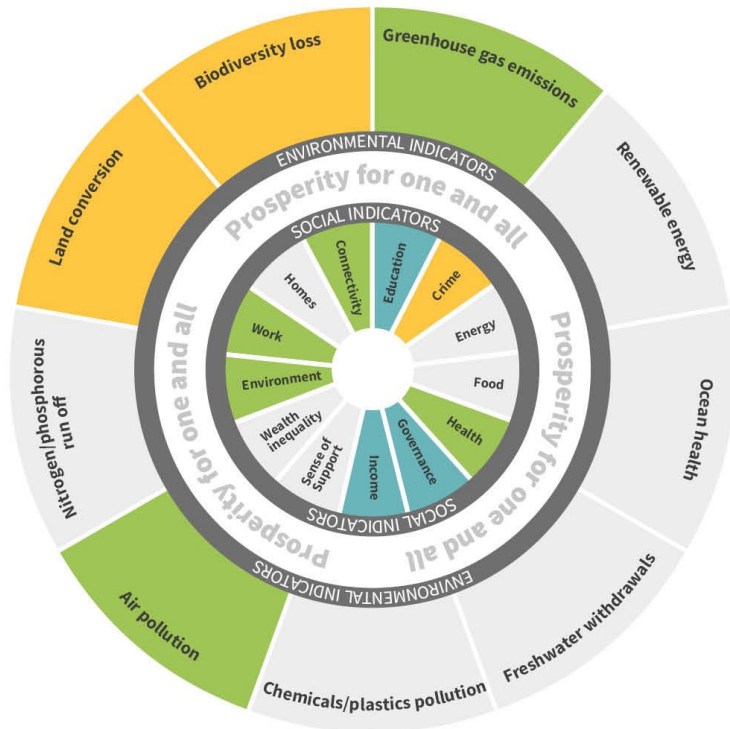
The Council's renewable energy portfolio could supply **37% of our** current electricity demand

Our staff commute **35 million miles a year** creating the same amount of carbon as our whole estate

Smarter working, transitioning the pool car fleet to EV and banning flights would realise us **significant savings**

Cornwall's Decision-making wheel

Placing people and planet at the centre of everything we do



The Saints Trail is designed with active travel in mind so has been given a score of 5 for the categories of air pollution and greenhouse gas emissions. Although land will be converted from green field in a few places, it is not all quality land and there is a full environmental impact assessment in place and mitigations planned to replace the biodiversity lost, in time.

Evidence from similar schemes shows substantial numbers of jobs created. There will also be educational signs along the trails to enable people to learn about the local historical features and environment. Although there is the possibility that opening up previously inaccessible areas of land to the public may make it possible to misuse the land, this is far outweighed by the huge health benefits and enjoyments of the local environment that will be gained by residents and visitors alike.

Innovating and leading the way



Bennamann
Biogas Project



Ventonteague
Wind Turbine



Cornish Lithium Ltd

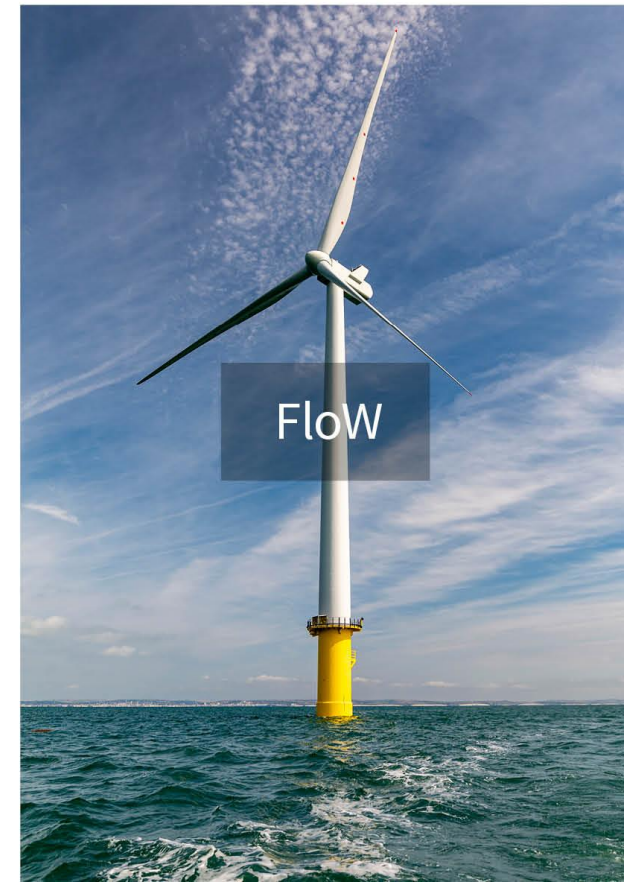
**We are supporting
and working in
partnership with
some of Cornwall's
innovative businesses**



Geothermal



Isles of Scilly Hitachi
Islands Project



FloW

Supporting community climate action



Bee-inspired at the
**Carbon neutral
Cornwall 2030**

HIVE. 



www.crowdfunder.co.uk/programmes/crowdfund-cornwall

My world. Our planet.

2020-2021 - *achieved a lot and learnt a lot*

Carbon Neutral Council

- ✓ New renewable energy contract for meeting the council's energy supply
- ✓ First 14 fleet vehicles transitioned to EV, and second wave of e-bikes introduced
- ✓ Ventonteague wind turbine operational & £30m Renewable Energy & Low Carbon Technology Fund approved
- ✓ Decision wheel embedded and merged with Comprehensive Impact Assessment
- ✓ Network of over 120 Green Champions
- ✓ Staff and Member climate literacy and manager training courses rolled out
- ✓ New social value policy agreed to drive sustainability through our supply chain and carbon hotspots identified



Carbon Neutral Cornwall

- ✓ 137,000 trees planted to date with plans for a further 100 hectares this planting season
- ✓ Secured ERDF funding to add a further 150 charge points across Cornwall
- ✓ Developed a £12.9m housing retrofit programme benefitting 900 Cornwall homes
- ✓ Climate Emergency Development Planning Document approved for submission to Secretary of State
- ✓ Local Nature Recovery Strategy pilot region
- ✓ Facilitating community engagement & delivery of 30 community led projects through £700,000 of match funding
- ✓ Became the 100th member of the UK100, an influential network of leading local authorities



Make a pledge or two

- ✓ Switch to a green energy tariff
- ✓ Buy as much local and seasonal produce as possible
- ✓ Educate yourself about the science and impact of Climate Change
- ✓ Walk, cycle or use public transport as far as possible
- ✓ Work out your own Carbon Footprint using one of the online calculators
- ✓ Look at the Energy Saving Trust website to see how you can save energy in your home
- ✓ Turn your heating thermostat at home down to between 18-21 degrees C
- ✓ Reduce holiday air miles by 50%
- ✓ Research 'Driving in a Greener Way'



Thank you / Muer ras

There is lots of information on our website:
www.cornwall.gov.uk/climatechange

and on the Carbon Neutral Cornwall Hive:
letstalk.cornwall.gov.uk/carbon-neutral-cornwall

Contact the Carbon Neutral Cornwall team:
email: climatechange@cornwall.gov.uk